

# Napsin A antibody



Catalog Number: 107321

## Product name

Napsin A antibody

IF: 1:10-1:100

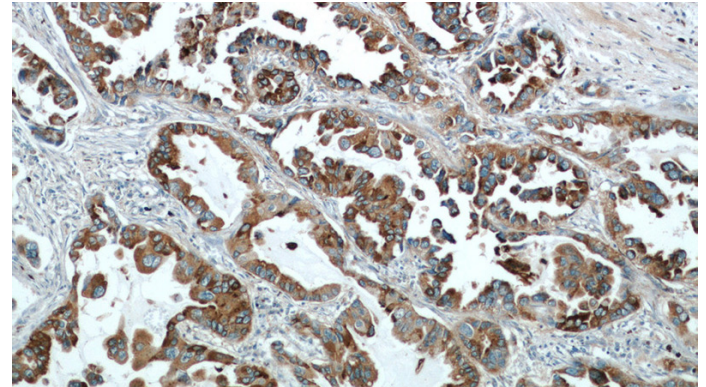
## Specificity

Human, Mouse; other species not tested.

## Validations

## Antibody description

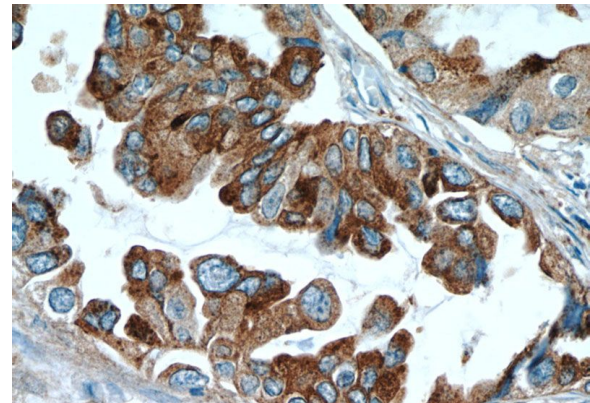
Napsin A Mouse Monoclonal antibody. Positive IHC detected in human lung cancer tissue, human kidney tissue, human lung tissue, rat lung tissue. Positive IF detected in HUVEC cells. Observed molecular weight by Western-blot: 45 kDa



Immunohistochemical of paraffin-embedded human lung cancer using Catalog No:107321(NAPSA antibody) at dilution of 1:50 (under 10x lens)

## Preparation

This antibody was obtained by immunization of Napsin A recombinant protein (Accession Number: NM\_004851). Purification method: Protein G purified.



Immunohistochemical of paraffin-embedded human lung cancer using Catalog No:107321(NAPSA antibody) at dilution of 1:50 (under 40x lens)

## Formulation

PBS with 0.02% sodium azide and 50% glycerol pH 7.3.

## Storage

Store at -20°C. DO NOT ALIQUOT

## Clonality

Monoclonal

## Ig Type

Mouse IgG1

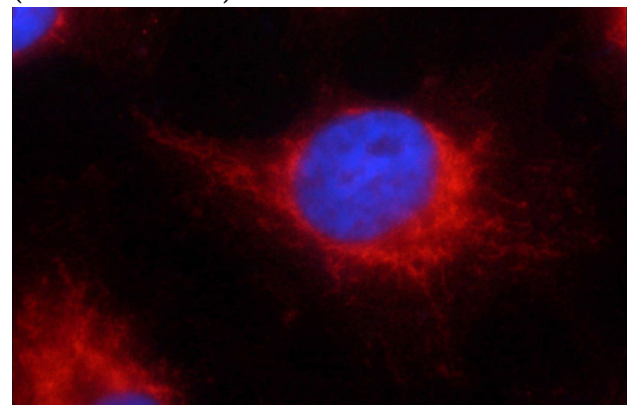
## Applications

ELISA, IHC, IF

## Dilutions

Recommended Dilution:

IHC: 1:20-1:200



Immunofluorescent analysis of HUVEC cells using Catalog No:107321(NAPSA Antibody) at dilution

# Napsin A antibody



Catalog Number: 107321

---

of 1:25 and Rhodamine-Goat anti-Mouse IgG