

NAPRT1 antibody



Catalog Number: 107320

Product name

NAPRT1 antibody

IHC: 1:20-1:200

IF: 1:50-1:500

Specificity

Human, Mouse; other species not tested.

Antibody description

NAPRT1 Mouse Monoclonal antibody. Positive IF detected in HeLa cells. Positive IHC detected in human small intestine tissue. Positive WB detected in HeLa cells, HEK-293 cells, HepG2 cells. Observed molecular weight by Western-blot: 51 kDa

Preparation

This antibody was obtained by immunization of NAPRT1 recombinant protein (Accession Number: NM_001363146). Purification method: Protein A purified.

Formulation

PBS with 0.02% sodium azide and 50% glycerol pH 7.3.

Storage

Store at -20°C. DO NOT ALIQUOT

Clonality

Monoclonal

Ig Type

Mouse IgG2a

Applications

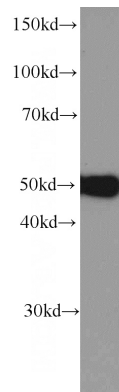
ELISA, WB, IHC, IF

Dilutions

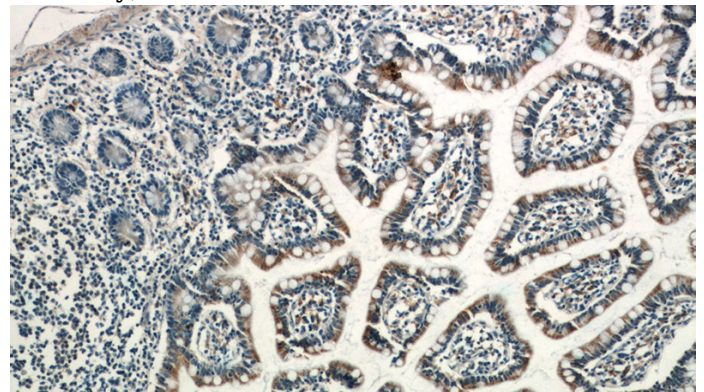
Recommended Dilution:

WB: 1:500-1:5000

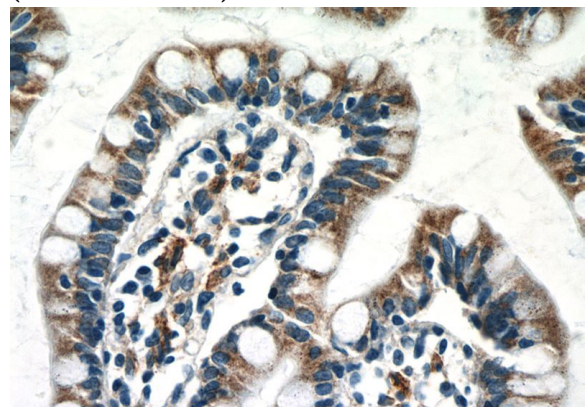
Validations



HeLa cells were subjected to SDS PAGE followed by western blot with Catalog No:107320(NAPRT1 Antibody) at dilution of 1:1500



Immunohistochemistry of paraffin-embedded human small intestine tissue slide using Catalog No:107320(NAPRT1 Antibody) at dilution of 1:50 (under 10x lens)



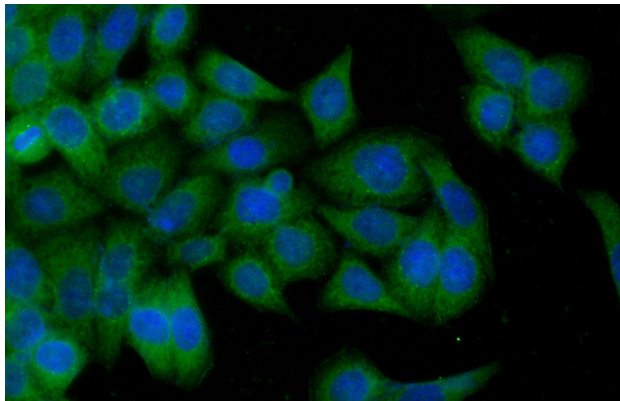
Immunohistochemistry of paraffin-embedded

NAPRT1 antibody



Catalog Number: 107320

human small intestine tissue slide using Catalog No:107320(NAPRT1 Antibody) at dilution of 1:50 (under 40x lens)



Immunofluorescent analysis of (-20oc Ethanol) fixed HeLa cells using Catalog No:107320(NAPRT1 Antibody) at dilution of 1:100 and Alexa Fluor 488-conjugated AffiniPure Goat Anti-Mouse IgG(H+L)