

# GLUT1 antibody

Catalog Number: 107300

## Product name

GLUT1 antibody

## Specificity

Human, Mouse; other species not tested.

## Antibody description

GLUT1 Mouse Monoclonal antibody. Positive WB detected in HEK-293 cells, NIH/3T3 cells. Positive FC detected in Jurkat cells. Positive IHC detected in human lung cancer tissue. Observed molecular weight by Western-blot: 45-55 kDa

## Preparation

This antibody was obtained by immunization of GLUT1 recombinant protein (Accession Number: NM\_006516). Purification method: Protein G purified.

## Formulation

PBS with 0.02% sodium azide and 50% glycerol pH 7.3.

## Storage

Store at -20°C. DO NOT ALIQUOT

## Clonality

Monoclonal

## Ig Type

Mouse IgG1

## Applications

ELISA, IHC, WB, FC

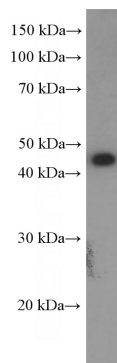
## Dilutions

Recommended Dilution:

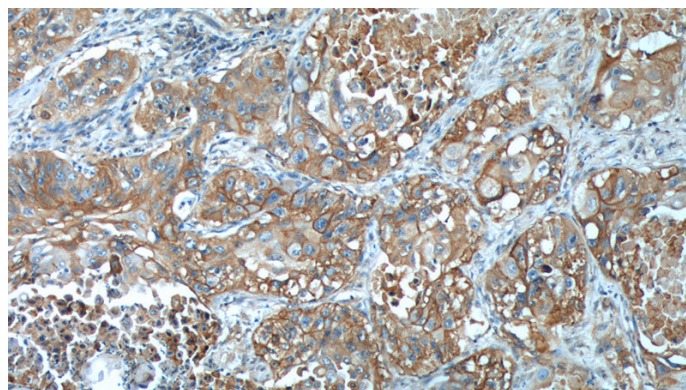
WB: 1:500-1:5000

IHC: 1:20-1:200

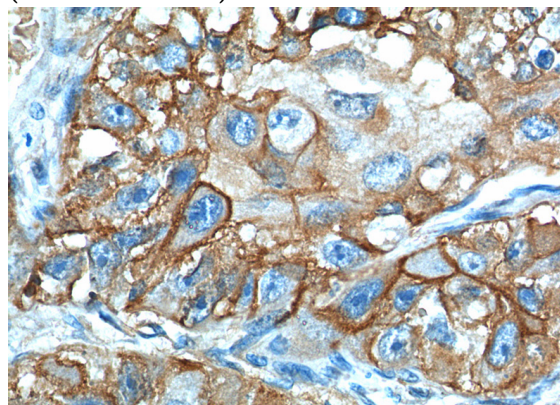
## Validations



HEK-293 cells were subjected to SDS PAGE followed by western blot with Catalog No:107300(SLC2A1, GLUT1 Antibody) at dilution of 1:1500



Immunohistochemistry of paraffin-embedded human lung cancer tissue slide using (SLC2A1, GLUT1 Antibody) at dilution of 1:300 (under 10x lens).



Immunohistochemistry of paraffin-embedded human lung cancer tissue slide using

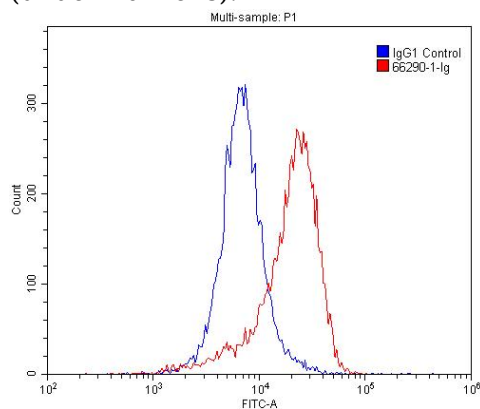
# GLUT1 antibody



Catalog Number: 107300

---

(SLC2A1, GLUT1 Antibody) at dilution of 1:300  
(under 40x lens).



1X10<sup>6</sup> Jurkat cells were stained with 0.2ug SLC2A1, GLUT1 antibody (Catalog No:107300, red) and control antibody (blue). Fixed with 4% PFA blocked with 3% BSA (30 min). Alexa Fluor 488-conjugated AffiniPure Goat Anti-Mouse IgG(H+L) with dilution 1:1500.