

IFITM2-specific antibody



Catalog Number: 107276

Product name

IFITM2-specific antibody

Specificity

Human; other species not tested.

Antibody description

IFITM2-specific Mouse Monoclonal antibody. Positive FC detected in HeLa cells. Positive WB detected in HepG2 cells, MCF7 cells, recombinant protein. Observed molecular weight by Western-blot: 15 kDa

Preparation

This antibody was obtained by immunization of recombinant protein (Accession Number: NM_006435). Purification method: Protein G purified.

Formulation

PBS with 0.02% sodium azide and 50% glycerol pH 7.3.

Storage

Store at -20°C. DO NOT ALIQUOT

Clonality

Monoclonal

Ig Type

Mouse IgG1

Applications

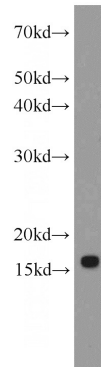
ELISA, WB, FC

Dilutions

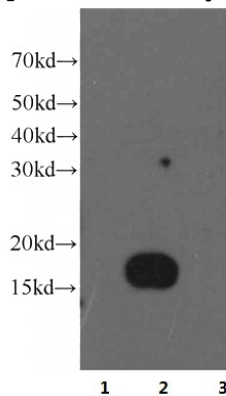
Recommended Dilution:

WB: 1:500-1:5000

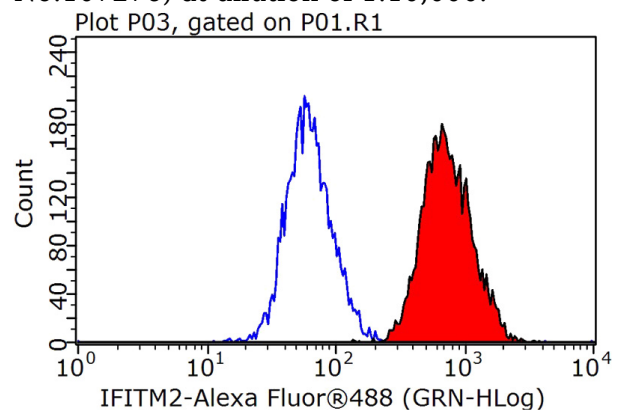
Validations



HepG2 cells were subjected to SDS PAGE followed by western blot with Catalog No:107276(IFITM2-specific antibody) at dilution of 1:1000



IFITM1 (Lane 1), IFITM2 (Lane 2) and IFITM3 (Lane 3) fusion proteins (20ng/lane) were subjected to SDS-PAGE followed by western blot with IFITM2 monoclonal antibody (Catalog No:107276) at dilution of 1:10,000.



1X10⁶ HeLa cells were stained with 0.2ug IFITM2-specific antibody (Catalog No:107276, red) and control antibody (blue). Fixed with 90%

IFITM2-specific antibody



Catalog Number: 107276

MeOH blocked with 3% BSA (30 min). Alexa Fluor 488-conjugated AffiniPure Goat Anti-Mouse IgG(H+L) with dilution 1:1000.