

# HSP60 antibody



Catalog Number: 107266

## Product name

HSP60 antibody

Recommended Dilution:

WB: 1:1000-1:10000

## Specificity

Human, Mouse, Rat; other species not tested.

IP: 1:1000-1:10000

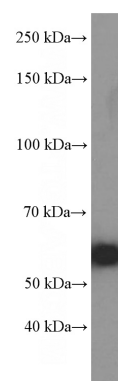
IHC: 1:20-1:200

## Antibody description

HSP60 Mouse Monoclonal antibody. Positive WB detected in HeLa cells, HepG2 cells, MCF7 cells. Positive IP detected in mouse liver tissue. Positive FC detected in HeLa cells. Positive IF detected in Hela cells. Positive IHC detected in human ovary tumor tissue, human skin cancer tissue, human spleen tissue, human testis tissue, human tonsil tissue, human tonsillitis tissue. Observed molecular weight by Western-blot: 60 kDa

IF: 1:20-1:200

## Validations



## Preparation

This antibody was obtained by immunization of HSP60 recombinant protein (Accession Number: NM\_002156). Purification method: Protein A purified.

HeLa cells were subjected to SDS PAGE followed by western blot with Catalog No:107266(HSPD1 Antibody) at dilution of 1:4000

## Formulation

PBS with 0.02% sodium azide and 50% glycerol pH 7.3.

## Storage

Store at -20°C. DO NOT ALIQUOT

## Clonality

Monoclonal

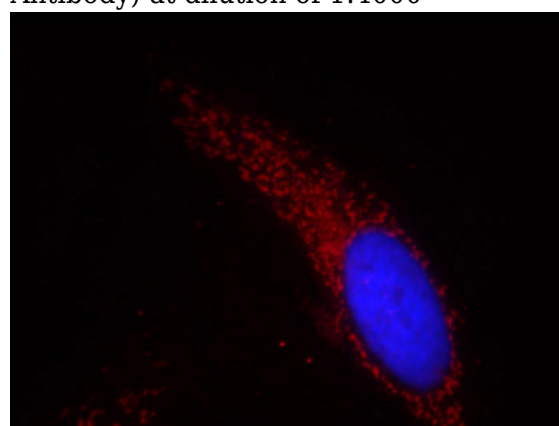
## Ig Type

Mouse IgG1

## Applications

ELISA, IF, FC, IP, WB, IHC

## Dilutions



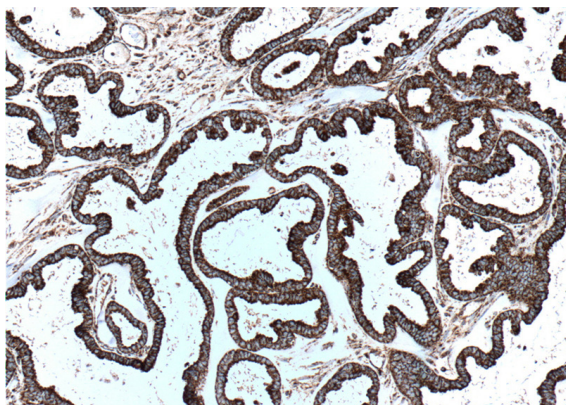
Immunofluorescent analysis of Hela cells, using HSPD1 antibody Catalog No: at 1:50 dilution and Rhodamine-labeled goat anti-mouse IgG (red). Blue pseudocolor = DAPI (fluorescent DNA dye).

IP Result of anti-HSPD1 (IP:Catalog No:107266, 5ug; Detection:Catalog No:107266 1:2000) with mouse liver tissue lysate 4000ug.

# HSP60 antibody

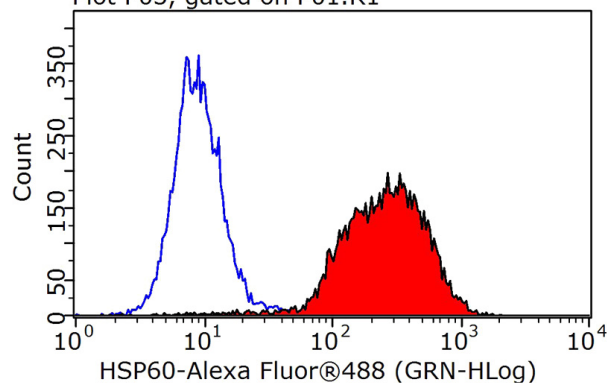


Catalog Number: 107266

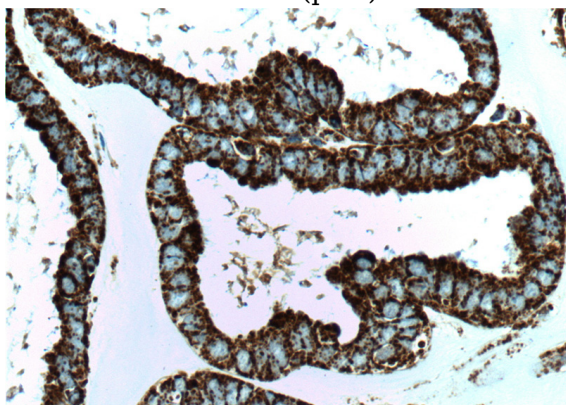


Immunohistochemistry of paraffin-embedded human ovary tumor tissue slide using Catalog No:107266(HSPD1 Antibody) at dilution of 1:500 (under 40x lens). heat mediated antigen retrieved with Tris-EDTA buffer(pH9).

Plot P03, gated on P01.R1



Immunohistochemistry of paraffin-embedded human ovary tumor tissue slide using Catalog No:107266(HSPD1 Antibody) at dilution of 1:500 (under 10x lens). heat mediated antigen retrieved with Tris-EDTA buffer(pH9).



1X10<sup>6</sup> HeLa cells were stained with 0.2ug HSPD1 antibody (Catalog No:107266, red) and control antibody (blue). Fixed with 90% MeOH blocked with 3% BSA (30 min). Alexa Fluor 488-conjugated AffiniPure Goat Anti-Mouse IgG(H+L) with dilution 1:1000.