

DSE antibody

Catalog Number: 107242

Product name

DSE antibody

Specificity

Human, Mouse; other species not tested.

Antibody description

DSE Mouse Monoclonal antibody. Positive IHC detected in human liver cancer tissue. Positive WB detected in COLO 320 cells. Observed molecular weight by Western-blot: 100 kDa

Preparation

This antibody was obtained by immunization of DSE recombinant protein (Accession Number: NM_013352). Purification method: Caprylic acid/ammonium sulfate precipitation.

Formulation

PBS with 0.1% sodium azide and 50% glycerol pH 7.3.

Storage

Store at -20°C. DO NOT ALIQUOT

Clonality

Monoclonal

Ig Type

Mouse IgM

Applications

ELISA, WB, IHC

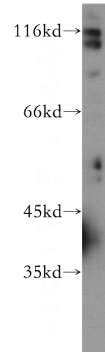
Dilutions

Recommended Dilution:

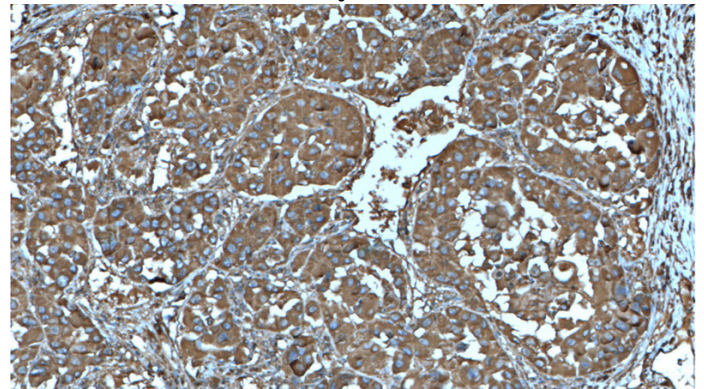
WB: 1:200-1:1000

IHC: 1:20-1:200

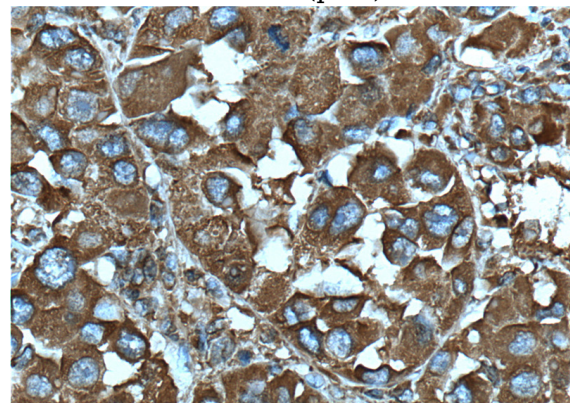
Validations



COLO 320 cells were subjected to SDS PAGE followed by western blot with Catalog No:107242(DSE antibody) at dilution of 1:300



Immunohistochemistry of paraffin-embedded human liver cancer tissue slide using Catalog No:107242(DSE Antibody) at dilution of 1:200 (under 40x lens). Heat-mediated antigen retrieval with Tris-EDTA buffer (pH9).



Immunohistochemistry of paraffin-embedded human liver cancer tissue slide using Catalog No:107242(DSE Antibody) at dilution of 1:200 (under 40x lens). Heat-mediated antigen retrieval with Tris-EDTA buffer (pH9).

DSE antibody



Catalog Number: 107242

with Tris-EDTA buffer(pH9).