

Cytokeratin 15 antibody



Catalog Number: 107230

Product name

Cytokeratin 15 antibody

IHC: 1:100-1:1000

IF: 1:10-1:100

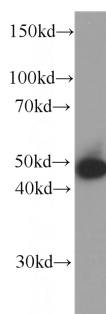
Specificity

Human, Mouse; other species not tested.

Validations

Antibody description

Cytokeratin 15 Mouse Monoclonal antibody. Positive IHC detected in human oesophagus cancer tissue, human skin cancer tissue. Positive IF detected in HeLa cells. Positive WB detected in A431 cells. Observed molecular weight by Western-blot: 49 kDa



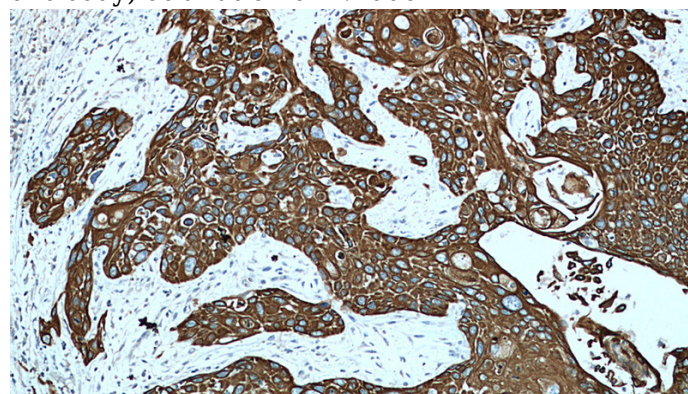
Preparation

This antibody was obtained by immunization of Cytokeratin 15 recombinant protein (Accession Number: NM_002275). Purification method: Protein G purified.

A431 cells were subjected to SDS PAGE followed by western blot with Catalog No:107230(KRT15 antibody) at dilution of 1:1000

Formulation

PBS with 0.02% sodium azide and 50% glycerol pH 7.3.



Storage

Store at -20°C. DO NOT ALIQUOT

Clonality

Monoclonal

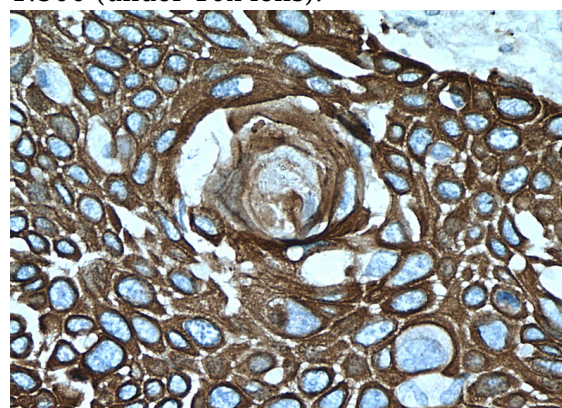
Immunohistochemistry of paraffin-embedded human oesophagus cancer tissue slide using Catalog No:107230(KRT15 Antibody) at dilution of 1:500 (under 10x lens).

Ig Type

Mouse IgG1

Applications

ELISA, WB, IF, IHC



Dilutions

Recommended Dilution:

WB: 1:500-1:5000

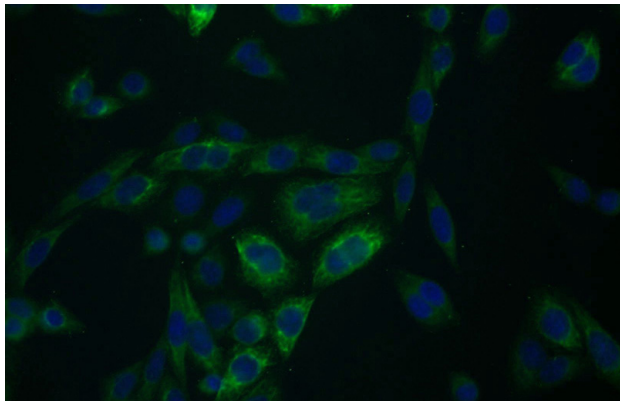
Immunohistochemistry of paraffin-embedded

Cytokeratin 15 antibody



Catalog Number: 107230

human oesophagus cancer tissue slide using Catalog No:107230(KRT15 Antibody) at dilution of 1:500 (under 40x lens).



Immunofluorescent analysis of HeLa cells using Catalog No:107230(KRT15 Antibody) at dilution of 1:25 and Alexa Fluor 488-conjugated AffiniPure Goat Anti-Mouse IgG(H+L)