

Cytochrome c antibody



Catalog Number: 107227

Product name

Cytochrome c antibody

WB: 1:5000-1:50000

IHC: 1:20-1:200

Specificity

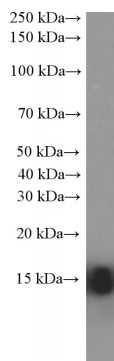
Human; other species not tested.

IF: 1:20-1:200

Antibody description

Cytochrome c Mouse Monoclonal antibody. Positive IHC detected in human breast cancer tissue, human liver cancer tissue. Positive IF detected in HepG2 cells. Positive WB detected in human skeletal muscle tissue, human heart tissue. Observed molecular weight by Western-blot: 12-15 kDa

Validations



Preparation

This antibody was obtained by immunization of Cyt^oChrome c recombinant protein (Accession Number: NM_018947). Purification method: Protein A purified.

human skeletal muscle tissue were subjected to SDS PAGE followed by western blot with Catalog No:107227(Cytochrome c Antibody) at dilution of

Formulation

PBS with 0.02% sodium azide and 50% glycerol pH 7.3.

Storage

Store at -20°C. DO NOT ALIQUOT

Clonality

Monoclonal

Ig Type

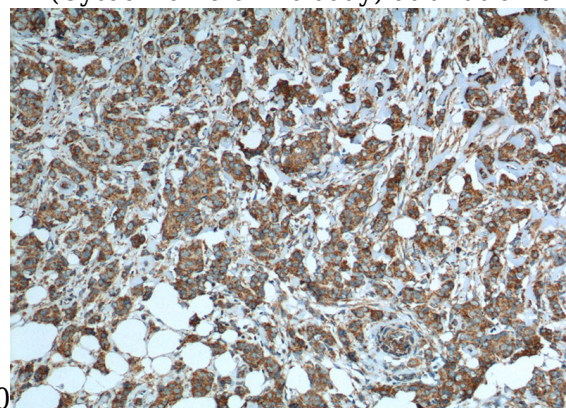
Mouse IgG2a

Applications

ELISA, IHC, WB, IF

Dilutions

Recommended Dilution:



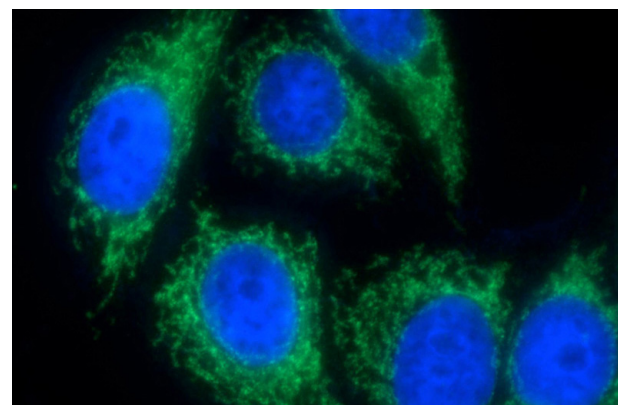
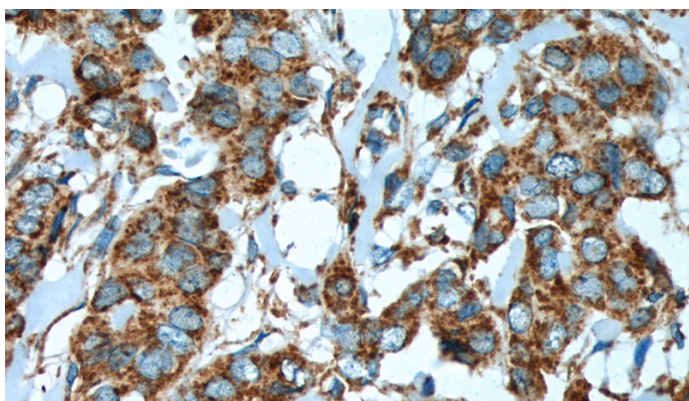
1:16000

Immunohistochemistry of paraffin-embedded human breast cancer tissue slide using (Cytochrome c Antibody) at dilution of 1:600 (under 10x lens). heat mediated antigen retrieved with Tris-EDTA buffer(pH9).

Cytochrome c antibody



Catalog Number: 107227



Immunohistochemistry of paraffin-embedded human breast cancer tissue slide using (Cytochrome c Antibody) at dilution of 1:600 (under 40x lens). heat mediated antigen retrieved with Tris-EDTA buffer(pH9).

Immunofluorescent analysis of (-20oc Ethanol) fixed HepG2 cells using Catalog No:107227(Cytochrome c Antibody) at dilution of 1:100 and Alexa Fluor 488-conjugated AffiniPure Goat Anti-Mouse IgG(H+L)