

# FKBP2 antibody



Catalog Number: 107216

## Product name

FKBP2 antibody

## Specificity

Human; other species not tested.

## Antibody description

FKBP2 Mouse Monoclonal antibody. Positive IHC detected in human prostate cancer tissue. Positive WB detected in Human cerebellum, human brain tissue. Observed molecular weight by Western-blot: 16 kDa

## Preparation

This antibody was obtained by immunization of FKBP2 recombinant protein (Accession Number: NM\_001370363). Purification method: Protein G purified.

## Formulation

PBS with 0.02% sodium azide and 50% glycerol pH 7.3.

## Storage

Store at -20°C. DO NOT ALIQUOT

## Clonality

Monoclonal

## Ig Type

Mouse IgG1

## Applications

ELISA, WB, IHC

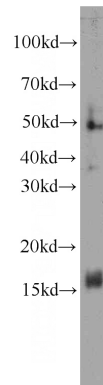
## Dilutions

Recommended Dilution:

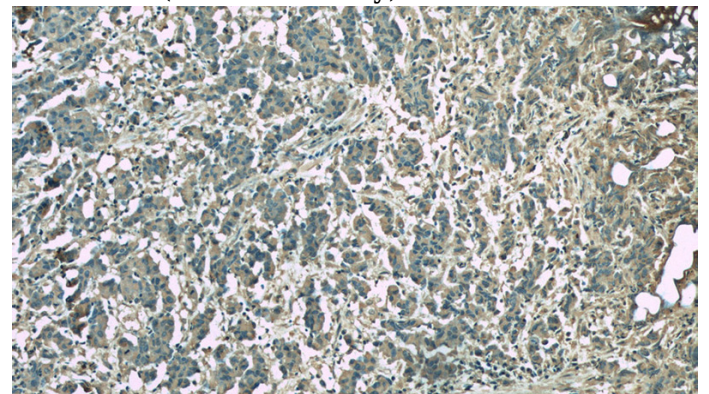
WB: 1:200-1:2000

IHC: 1:20-1:200

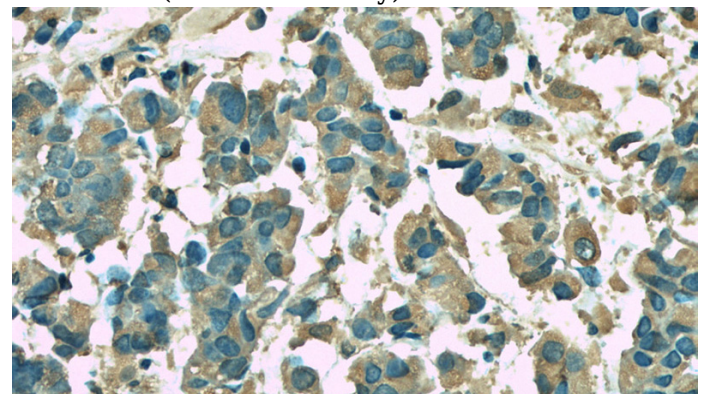
## Validations



human cerebellum tissue were subjected to SDS PAGE followed by western blot with Catalog No:107216(FKBP2 antibody) at dilution of 1:500



Immunohistochemistry of paraffin-embedded human prostate cancer slide using Catalog No:107216(FKBP2 Antibody) at dilution of 1:50



Immunohistochemistry of paraffin-embedded human prostate cancer slide using Catalog No:107216(FKBP2 Antibody) at dilution of 1:50