

Fibulin 5 antibody

Catalog Number: 107215

Product name

Fibulin 5 antibody

IHC: 1:20-1:200

IF: 1:20-1:200

Specificity

Human, Mouse; other species not tested.

Antibody description

Fibulin 5 Mouse Monoclonal antibody. Positive WB detected in MCF7 cells, HeLa cells. Positive IHC detected in human heart tissue, human pancreas tissue. Positive IF detected in HeLa cells. Observed molecular weight by Western-blot: 50 kDa

Preparation

This antibody was obtained by immunization of Fibulin 5 recombinant protein (Accession Number: NM_006329). Purification method: Caprylic acid/ammonium sulfate precipitation.

Formulation

PBS with 0.1% sodium azide and 50% glycerol pH 7.3.

Storage

Store at -20°C. DO NOT ALIQUOT

Clonality

Monoclonal

Ig Type

Mouse IgG1

Applications

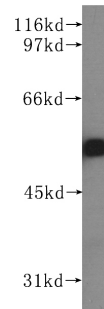
ELISA, WB, IHC, IF

Dilutions

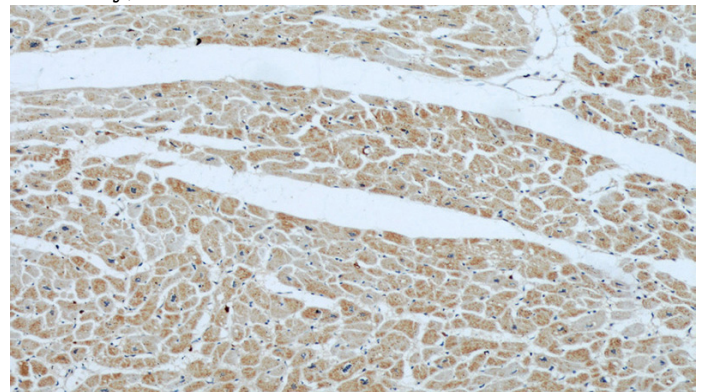
Recommended Dilution:

WB: 1:500-1:5000

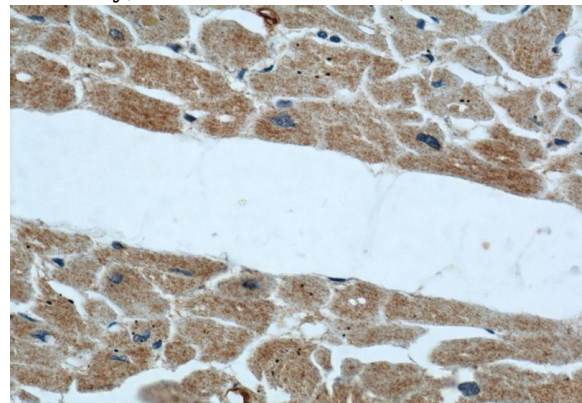
Validations



MCF7 cells were subjected to SDS PAGE followed by western blot with Catalog No:107215(FBLN5 antibody) at dilution of 1:500



Immunohistochemical of paraffin-embedded human heart using Catalog No:107215(FBLN5 antibody) at dilution of 1:50 (under 10x lens)

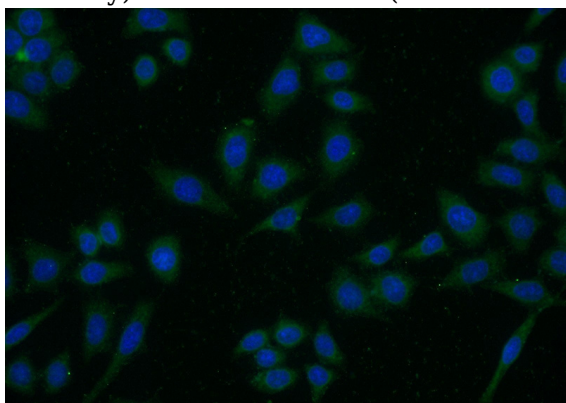


Immunohistochemical of paraffin-embedded human heart using Catalog No:107215(FBLN5 antibody) at dilution of 1:50 (under 10x lens)

Fibulin 5 antibody

Catalog Number: 107215

antibody) at dilution of 1:50 (under 40x lens)



Immunofluorescent analysis of (-20oc Ethanol) fixed HeLa cells using Catalog No:107215(FBLN5 Antibody) at dilution of 1:50 and Alexa Fluor 488-conjugated AffiniPure Goat Anti-Mouse IgG(H+L)