

Fibrinogen gamma chain antibody



Catalog Number: 107212

Product name

Fibrinogen gamma chain antibody

IHC: 1:20-1:200

IF: 1:20-1:200

Specificity

Human; other species not tested.

Antibody description

Fibrinogen gamma chain Mouse Monoclonal antibody. Positive IHC detected in human liver tissue, human kidney tissue. Positive IF detected in L02 cells. Positive WB detected in L02 cells. Observed molecular weight by Western-blot: 52 kDa

Preparation

This antibody was obtained by immunization of Fibrinogen gamma chain recombinant protein (Accession Number: NM_000509). Purification method: Thiophilic Affinity Chromatography.

Formulation

PBS with 0.02% sodium azide and 50% glycerol pH 7.3.

Storage

Store at -20°C. DO NOT ALIQUOT

Clonality

Monoclonal

Ig Type

Mouse IgM

Applications

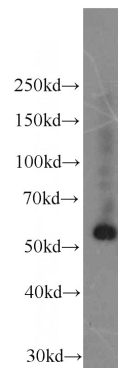
ELISA, WB, IHC, IF

Dilutions

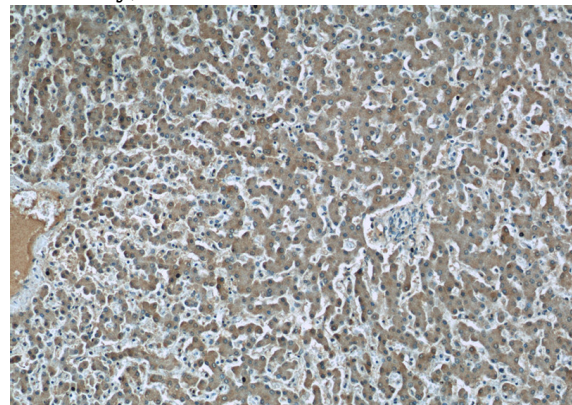
Recommended Dilution:

WB: 1:500-1:5000

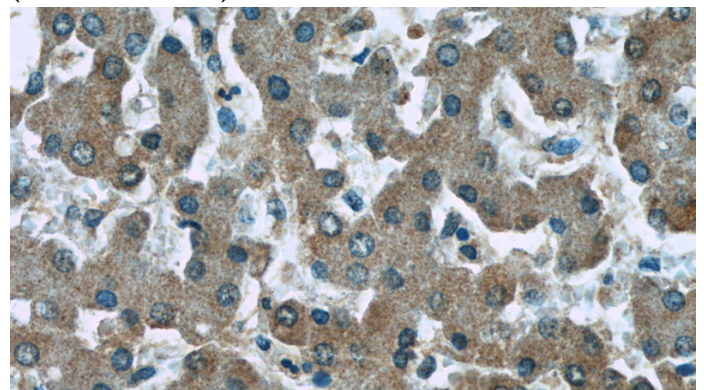
Validations



L02 cells were subjected to SDS PAGE followed by western blot with Catalog No:107212(FGG Antibody) at dilution of 1:1000



Immunohistochemistry of paraffin-embedded human liver tissue slide using Catalog No:107212(FGG Antibody) at dilution of 1:50 (under 10x lens)



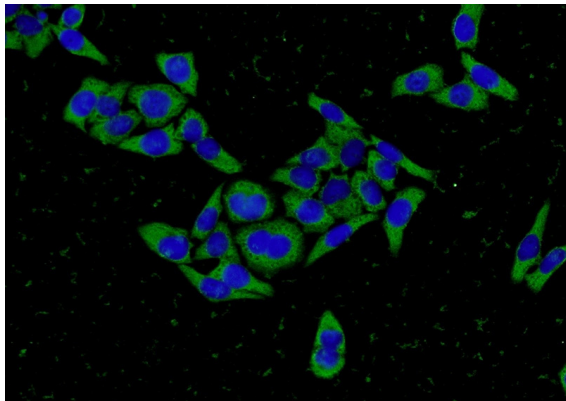
Immunohistochemistry of paraffin-embedded

Fibrinogen gamma chain antibody



Catalog Number: 107212

human liver tissue slide using Catalog
No:107212(FGG Antibody) at dilution of 1:50
(under 40x lens)



Immunofluorescent analysis of L02 cells using
Catalog No:107212(FGG Antibody) at dilution of
1:50 and Alexa Fluor 488-conjugated AffiniPure
Goat Anti-Mouse IgG(H+L)