

CTAGE1 antibody



Catalog Number: 107181

Product name

CTAGE1 antibody

IHC: 1:20-1:200

IF: 1:10-1:100

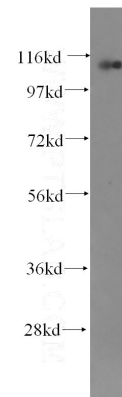
Specificity

Human; other species not tested.

Validations

Antibody description

CTAGE1 Mouse Monoclonal antibody. Positive IF detected in MCF-7 cells, Hela cells. Positive IHC detected in human ovary tumor tissue. Positive WB detected in Jurkat cells, HeLa cells. Observed molecular weight by Western-blot: 120kd



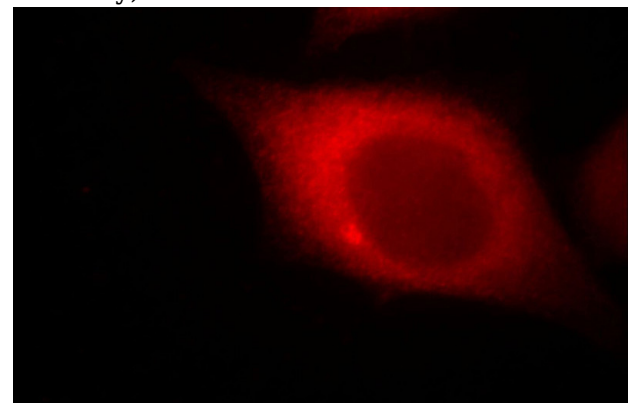
Preparation

This antibody was obtained by immunization of CTAGE1 recombinant protein (Accession Number: BC031065). Purification method: Caprylic Acid/Ammonium Sulfate Precipitation.

Jurkat cells were subjected to SDS PAGE followed by western blot with Catalog No:107181(CTAGE1 antibody) at dilution of 1:500

Formulation

PBS with 0.1% sodium azide and 50% glycerol pH 7.3.



Storage

Store at -20°C. DO NOT ALIQUOT

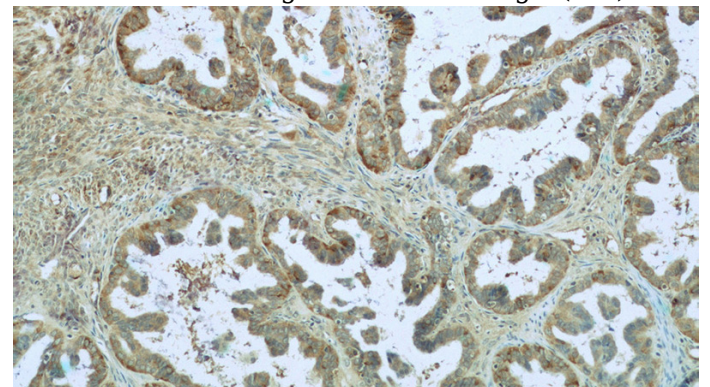
Clonality

Monoclonal

Immunofluorescent analysis of MCF-7 cells, using CTAGE1 antibody Catalog No: at 1:25 dilution and Rhodamine-labeled goat anti-mouse IgG (red).

Ig Type

Mouse IgG2b



Applications

ELISA, WB, IF, IHC

Dilutions

Recommended Dilution:

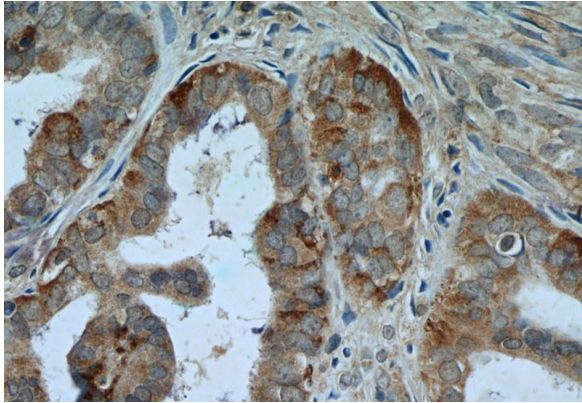
WB: 1:200-1:2000

Immunohistochemistry of paraffin-embedded human ovary tumor tissue slide using Catalog

CTAGE1 antibody

Catalog Number: 107181

No:107181(CTAGE1 Antibody) at dilution of 1:50
(under 10x lens)



Immunohistochemistry of paraffin-embedded
human ovary tumor tissue slide using Catalog
No:107181(CTAGE1 Antibody) at dilution of 1:50
(under 40x lens)