

# Creatine Kinase M-Specific antibody



Catalog Number: 107175

## Product name

Creatine Kinase M-Specific antibody

IHC: 1:20-1:200

IF: 1:20-1:200

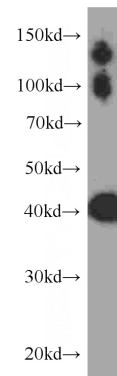
## Specificity

Human, Mouse, Rat; other species not tested.

## Validations

## Antibody description

Creatine Kinase M-Specific Mouse Monoclonal antibody. Positive IHC detected in human heart tissue. Positive IF detected in HepG2 cells. Positive WB detected in Human skeletal muscle, human skeletal muscle tissue, rat brain tissue. Observed molecular weight by Western-blot: 43 kDa, 90 kDa, 130 kDa



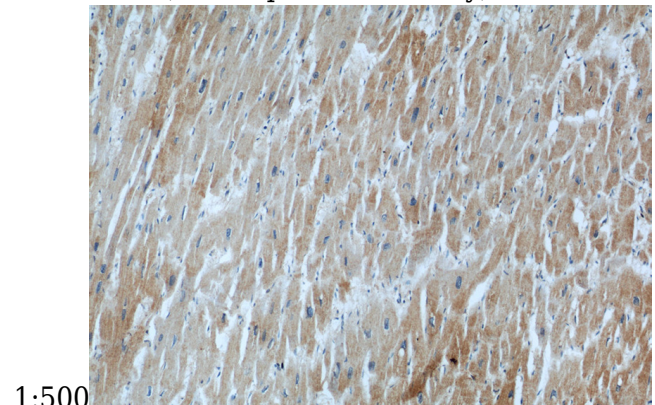
## Preparation

This antibody was obtained by immunization of Peptide (Accession Number: NM\_001824). Purification method: Protein A purified.

human skeletal muscle tissue were subjected to SDS PAGE followed by western blot with Catalog No:107175(CKM-Specific antibody) at dilution of

## Formulation

PBS with 0.1% sodium azide and 50% glycerol pH 7.3.



## Storage

Store at -20°C. DO NOT ALIQUOT

## Clonality

Monoclonal

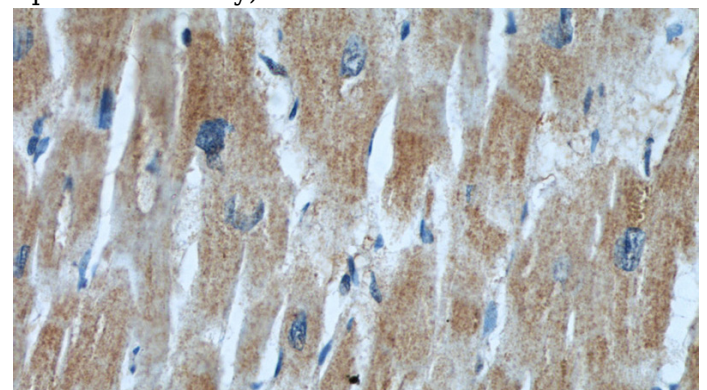
Immunohistochemistry of paraffin-embedded human heart slide using Catalog No:107175(CKM-Specific Antibody) at dilution of 1:50

## Ig Type

Mouse IgG2a

## Applications

ELISA, WB, IHC, IF



## Dilutions

Recommended Dilution:

WB: 1:200-1:2000

Immunohistochemistry of paraffin-embedded human heart slide using Catalog No:107175(CKM-

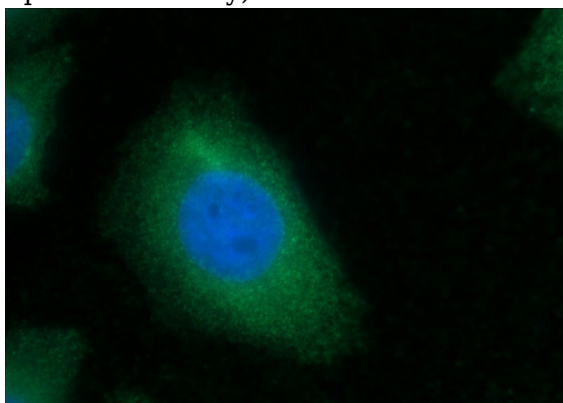
# Creatine Kinase M-Specific antibody



Catalog Number: 107175

---

Specific Antibody) at dilution of 1:50



Immunofluorescent analysis of HepG2 cells using Catalog No:107175(CKM-Specific Antibody) at dilution of 1:50 and Alexa Fluor 488-conjugated AffiniPure Goat Anti-Mouse IgG(H+L)