

COTL1 antibody

Catalog Number: 107170

Product name

COTL1 antibody

IHC: 1:20-1:200

IF: 1:20-1:200

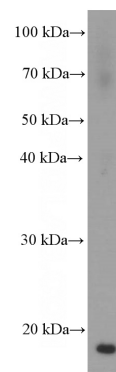
Specificity

Human, Mouse; other species not tested.

Validations

Antibody description

COTL1 Mouse Monoclonal antibody. Positive WB detected in fetal human brain tissue, human brain tissue. Positive IHC detected in human kidney tissue, human lung cancer tissue. Positive IF detected in HepG2 cells. Observed molecular weight by Western-blot: 16 kDa



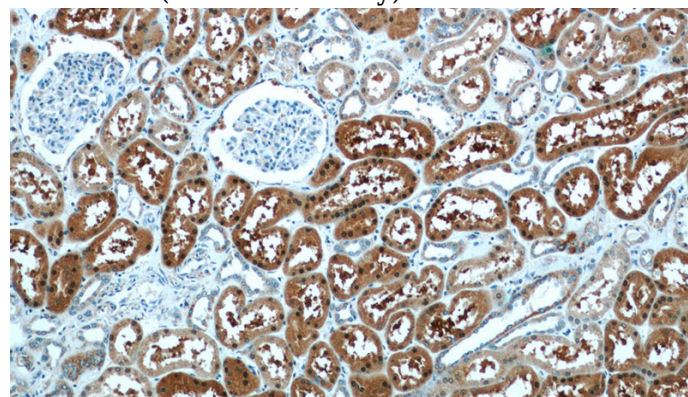
Preparation

This antibody was obtained by immunization of COTL1 recombinant protein (Accession Number: NM_021149). Purification method: Protein A purified.

fetal human brain tissue were subjected to SDS PAGE followed by western blot with Catalog No:107170(COTL1 Antibody) at dilution of 1:2000

Formulation

PBS with 0.02% sodium azide and 50% glycerol pH 7.3.



Storage

Store at -20°C. DO NOT ALIQUOT

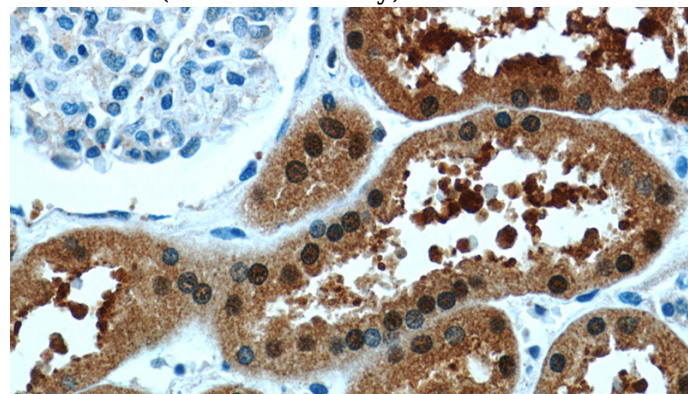
Clonality

Monoclonal

Immunohistochemistry of paraffin-embedded human kidney tissue slide using Catalog No:107170(COTL1 Antibody) at dilution of 1:50

Ig Type

Mouse IgG1



Applications

ELISA, IHC, IF, WB

Dilutions

Recommended Dilution:

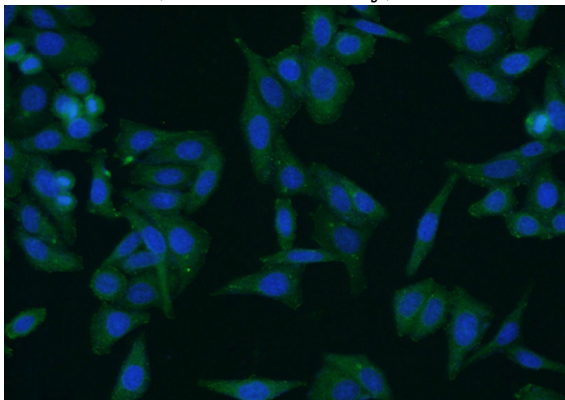
WB: 1:1000-1:10000

Immunohistochemistry of paraffin-embedded human kidney tissue slide using Catalog

COTL1 antibody

Catalog Number: 107170

No:107170(COTL1 Antibody) at dilution of 1:50



Immunofluorescent analysis of HepG2 cells using Catalog No:107170(COTL1 Antibody) at dilution of 1:50 and Alexa Fluor 488-conjugated AffiniPure Goat Anti-Mouse IgG(H+L)