

# CLEC11A antibody



Catalog Number: 107160

## Product name

CLEC11A antibody

WB: 1:500-1:5000

IHC: 1:20-1:200

## Immunogen

[Human CLEC11A Recombinant protein \(His tag\)](#)

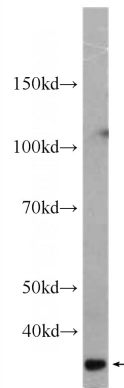
## Validations

## Specificity

Human; other species not tested.

## Antibody description

CLEC11A Mouse Monoclonal antibody. Positive IHC detected in human lymphoma tissue. Positive WB detected in human heart tissue. Observed molecular weight by Western-blot: 36 kDa



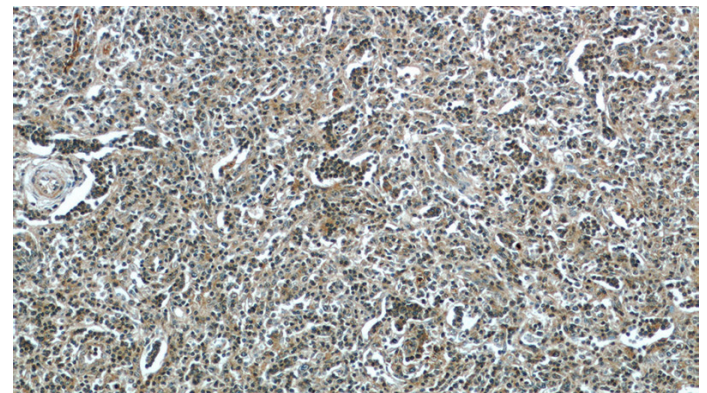
## Preparation

This antibody was obtained by immunization of CLEC11A recombinant protein (Accession Number: NM\_002975). Purification method: Protein A purified.

human heart tissue were subjected to SDS PAGE followed by western blot with Catalog No:107160(CLEC11A Antibody) at dilution of 1:1000

## Formulation

PBS with 0.02% sodium azide and 50% glycerol pH 7.3.



## Storage

Store at -20°C. DO NOT ALIQUOT

## Clonality

Monoclonal

## Ig Type

Mouse IgG2b

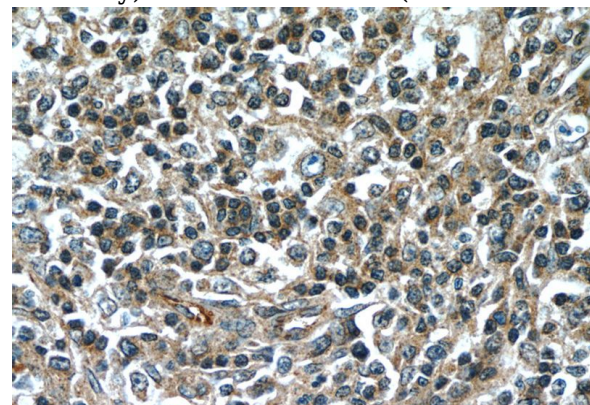
## Applications

ELISA, IHC, WB

## Dilutions

Recommended Dilution:

Immunohistochemistry of paraffin-embedded human lymphoma tissue slide using (CLEC11A Antibody) at dilution of 1:50 (under 10x lens)



Immunohistochemistry of paraffin-embedded

# CLEC11A antibody



Catalog Number: 107160

---

human lymphoma tissue slide using (CLEC11A Antibody) at dilution of 1:50 (under 40x lens)