

CISD2-Specific antibody



Catalog Number: 107158

Product name

CISD2-Specific antibody

Specificity

Human; other species not tested.

Antibody description

CISD2-Specific Mouse Monoclonal antibody. Positive IHC detected in human kidney tissue, human testis tissue. Positive WB detected in MCF7 cells, human brain tissue. Observed molecular weight by Western-blot: 15 kDa

Preparation

This antibody was obtained by immunization of recombinant protein (Accession Number: NM_001008388). Purification method: Protein A purified.

Formulation

PBS with 0.02% sodium azide and 50% glycerol pH 7.3.

Storage

Store at -20°C. DO NOT ALIQUOT

Clonality

Monoclonal

Ig Type

Mouse IgG2b

Applications

ELISA, WB, IHC

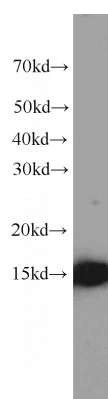
Dilutions

Recommended Dilution:

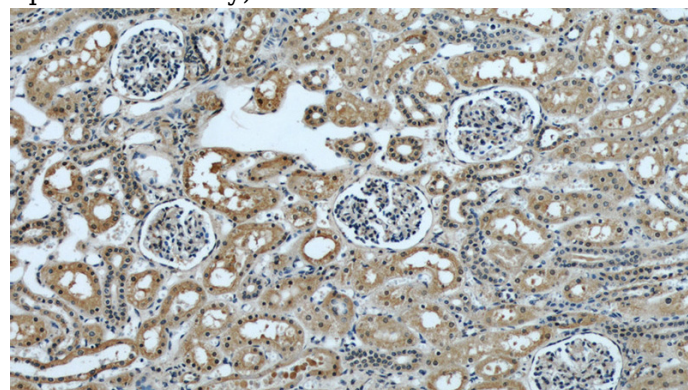
WB: 1:500-1:5000

IHC: 1:20-1:200

Validations



MCF7 cells were subjected to SDS PAGE followed by western blot with Catalog No:107158(CISD2-Specific antibody) at dilution of 1:1000



Immunohistochemical of paraffin-embedded human kidney using Catalog No:107158(CISD2-Specific antibody) at dilution of 1:50 (under 10x lens)