

Ceruloplasmin antibody



Catalog Number: 107150

Product name

Ceruloplasmin antibody

Specificity

Human; other species not tested.

Antibody description

Ceruloplasmin Mouse Monoclonal antibody.
Positive WB detected in human placenta tissue,
human blood tissue. Positive IHC detected in
human ovary tumor tissue, human liver tissue.
Observed molecular weight by Western-blot: 140
kDa

Preparation

This antibody was obtained by immunization of
Ceruloplasmin recombinant protein (Accession
Number: NM_000096). Purification method:
Protein G purified.

Formulation

PBS with 0.02% sodium azide and 50% glycerol
pH 7.3.

Storage

Store at -20°C. DO NOT ALIQUOT

Clonality

Monoclonal

Ig Type

Mouse IgG1

Applications

ELISA, WB, IHC

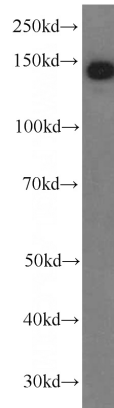
Dilutions

Recommended Dilution:

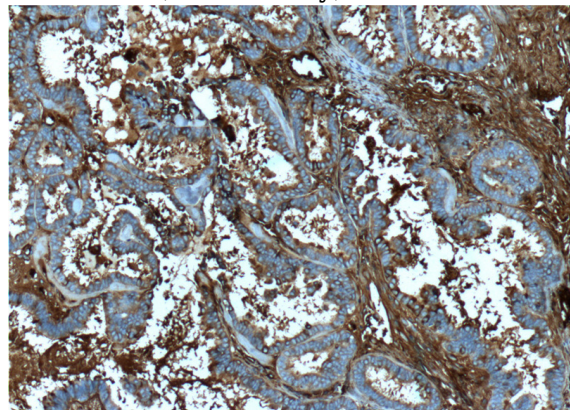
WB: 1:500-1:5000

IHC: 1:20-1:200

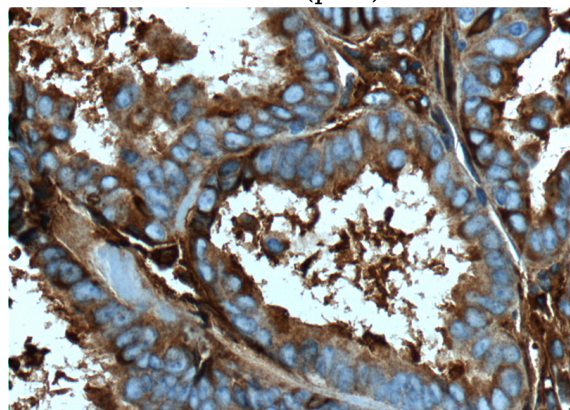
Validations



human placenta tissue were subjected to SDS
PAGE followed by western blot with Catalog
No:107150(CP Antibody) at dilution of 1:1000



Immunohistochemistry of paraffin-embedded
human ovary tumor tissue slide using Catalog
No:107150(CP Antibody) at dilution of 1:200
(under 10x lens). heat mediated antigen retrieved
with Tris-EDTA buffer(pH9).



Immunohistochemistry of paraffin-embedded

Ceruloplasmin antibody



Catalog Number: 107150

human ovary tumor tissue slide using Catalog
No:107150(CP Antibody) at dilution of 1:200

(under 40x lens). heat mediated antigen retrieved
with Tris-EDTA buffer(pH9).