

Amylase, alpha antibody



Catalog Number: 107123

Product name

Amylase, alpha antibody

Immunogen

[Human AMY2A Recombinant protein \(His tag\)](#)

Specificity

Human; other species not tested.

Antibody description

Amylase, alpha Mouse Monoclonal antibody.
Positive IHC detected in human pancreas cancer tissue. Positive IF detected in BxPC-3 cells.
Positive WB detected in human saliva. Observed molecular weight by Western-blot: 58 kDa

Preparation

This antibody was obtained by immunization of Amylase, alpha recombinant protein (Accession Number: NM_000699). Purification method: Protein A purified.

Formulation

PBS with 0.02% sodium azide and 50% glycerol pH 7.3.

Storage

Store at -20°C. DO NOT ALIQUOT

Clonality

Monoclonal

Ig Type

Mouse IgG2b

Applications

ELISA, WB, IHC, IF

Dilutions

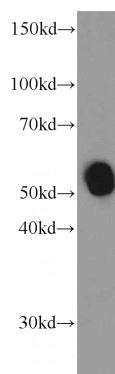
Recommended Dilution:

WB: 1:1000-1:10000

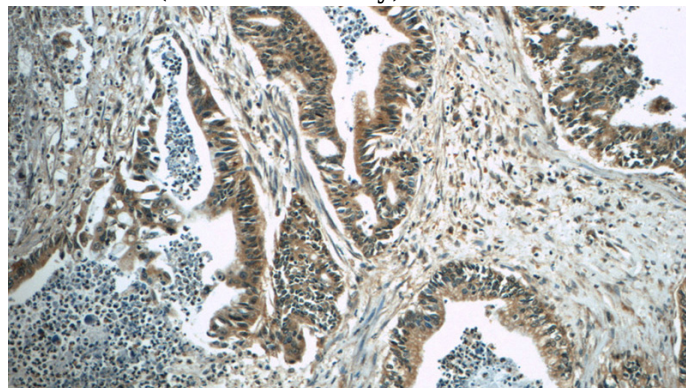
IHC: 1:20-1:200

IF: 1:10-1:100

Validations



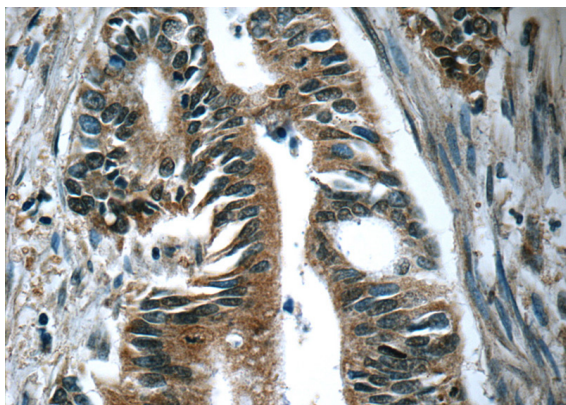
human saliva were subjected to SDS PAGE followed by western blot with Catalog No:107583(AMY2A antibody) at dilution of 1:2000



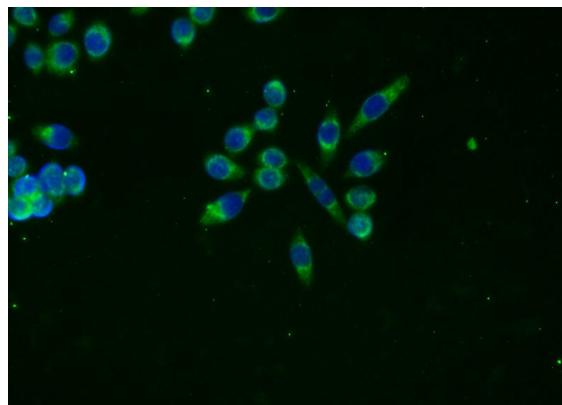
Immunohistochemistry of paraffin-embedded human pancreas cancer tissue slide using Catalog No:107583(AMY2A Antibody) at dilution of 1:50(under 10x lens)

Amylase, alpha antibody

Catalog Number: 107123



Immunohistochemistry of paraffin-embedded human pancreas cancer tissue slide using Catalog No:107583(AMY2A Antibody) at dilution of 1:50(under 40x lens)



Immunofluorescent analysis of BxPC-3 cells using Catalog No:107583(AMY2A Antibody) at dilution of 1:25 and Alexa Fluor 488-conjugated AffiniPure Goat Anti-Mouse IgG(H+L)