

alpha Tubulin antibody



Catalog Number: 107118

Product name

alpha Tubulin antibody

Immunogen

[Human Tubulin-Alpha Recombinant protein \(His tag\)](#)

Specificity

Human, Mouse, Rat; other species not tested.

Antibody description

alpha Tubulin Mouse Monoclonal antibody. Positive IP detected in HeLa cells. Positive WB detected in multi-cells, A431 cells, HeLa, HeLa cells, L02 cells, SW 1990 cells. Positive FC detected in HeLa cells. Positive IF detected in HepG2 cells, HeLa cells, MCF-7 cells. Positive IHC detected in human liver cancer tissue, human testis tissue, human tonsillitis tissue. Observed molecular weight by Western-blot: 52 kDa

Preparation

This antibody was obtained by immunization of alpha Tubulin recombinant protein (Accession Number: NM_006082). Purification method: Protein A purified.

Formulation

PBS with 0.02% sodium azide and 50% glycerol pH 7.3.

Storage

Store at -20°C. DO NOT ALIQUOT

Clonality

Monoclonal

Ig Type

Mouse IgG2b

Applications

ELISA, IHC, FC, IP, IF, WB

Dilutions

Recommended Dilution:

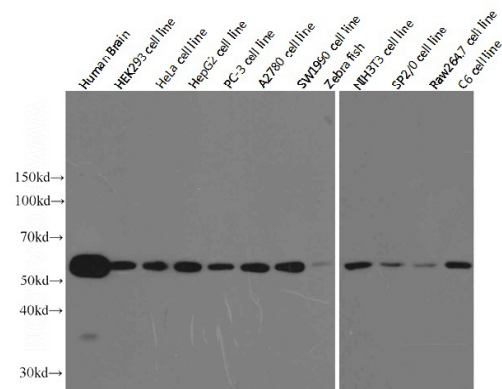
WB: 1:2000-1:10000

IP: 1:500-1:5000

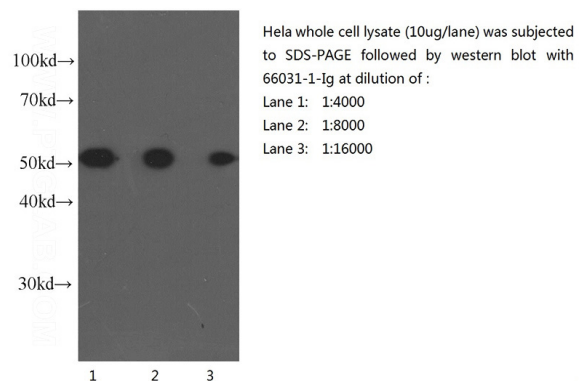
IHC: 1:50-1:500

IF: 1:20-1:200

Validations



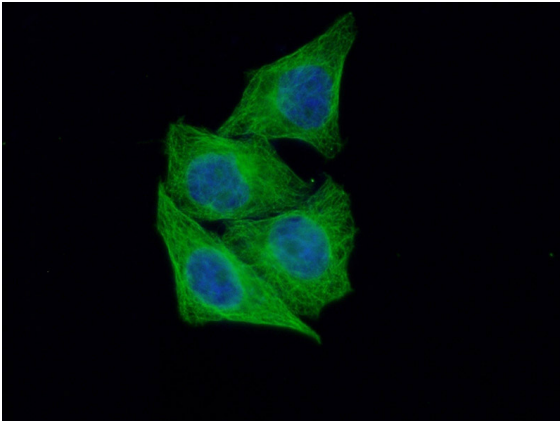
Western blot analysis of alpha-tubulin in various tissues and cell lines using Proteintech antibody Catalog No:117299 at a dilution of 1:10000.



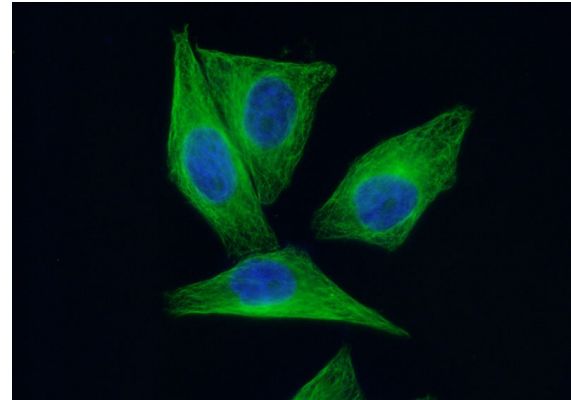
Western blot of HeLa cell with anti-Tubulin-Alpha (Catalog No:117299) at various dilutions.

alpha Tubulin antibody

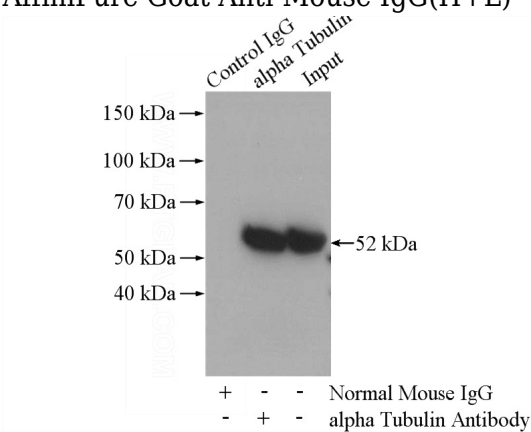
Catalog Number: 107118



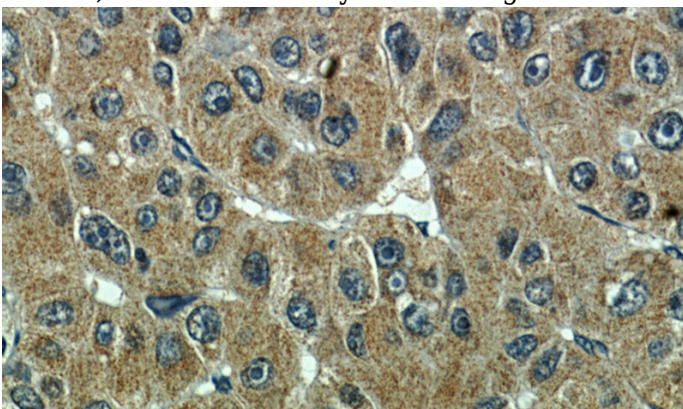
Immunofluorescent analysis of HepG2 cells using Catalog No:117299(Tubulin-Alpha Antibody) at dilution of 1:100 and Alexa Fluor 488-conjugated AffiniPure Goat Anti-Mouse IgG(H+L)



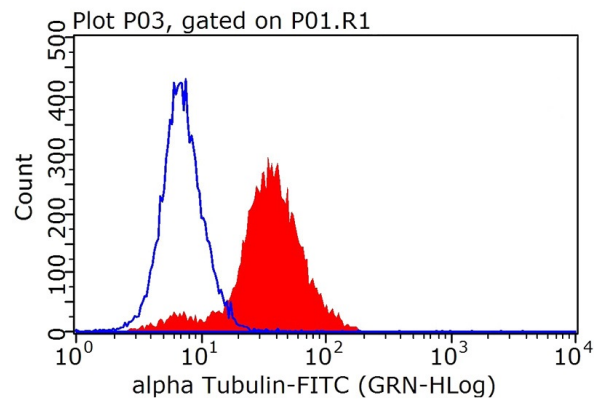
Immunofluorescent analysis of HepG2 cells using Catalog No:117299(Tubulin-Alpha Antibody) at dilution of 1:100 and Alexa Fluor 488-conjugated AffiniPure Goat Anti-Mouse IgG(H+L)



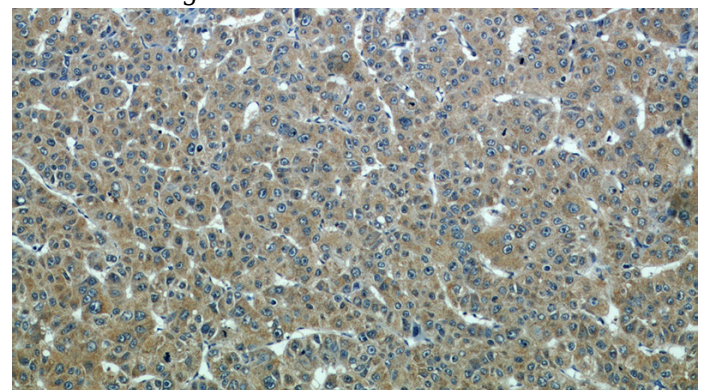
IP Result of anti-Tubulin-Alpha (IP:Catalog No:117299, 5ug; Detection:Catalog No:117299 1:1000) with HeLa cells lysate 2800ug.



Immunohistochemical of paraffin-embedded human liver cancer using Catalog No:117299(Tubulin-Alpha antibody) at dilution of 1:100 (under 40x lens)



1X10⁶ HeLa cells were stained with 0.2ug Tubulin-Alpha antibody (Catalog No:117299, red) and control antibody (blue). Fixed with 90% MeOH blocked with 3% BSA (30 min). FITC-Goat anti-Mouse IgG with dilution 1:100.



Immunohistochemical of paraffin-embedded human liver cancer using Catalog No:117299(Tubulin-Alpha antibody) at dilution of 1:100 (under 10x lens)