

Aldolase C antibody



Catalog Number: 107111

Product name

Aldolase C antibody

IHC: 1:50-1:500

IF: 1:20-1:200

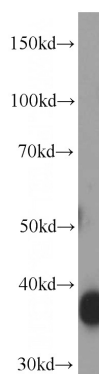
Specificity

Human; other species not tested.

Validations

Antibody description

Aldolase C Mouse Monoclonal antibody. Positive WB detected in human heart tissue, human brain tissue. Positive IHC detected in human liver cancer tissue. Positive IF detected in HepG2 cells. Observed molecular weight by Western-blot: 39 kDa



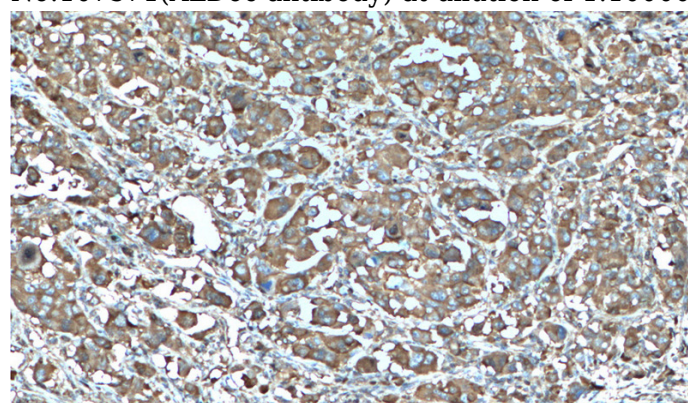
Preparation

This antibody was obtained by immunization of Aldolase C recombinant protein (Accession Number: NM_005165). Purification method: Protein G purified.

human heart tissue were subjected to SDS PAGE followed by western blot with Catalog No:107571(ALDoc antibody) at dilution of 1:10000

Formulation

PBS with 0.02% sodium azide and 50% glycerol pH 7.3.



Storage

Store at -20°C. DO NOT ALIQUOT

Clonality

Monoclonal

Immunohistochemistry of paraffin-embedded human liver cancer tissue slide using Catalog No:107571(ALDoc Antibody) at dilution of 1:200 (under 10x lens). heat mediated antigen retrieved with Tris-EDTA buffer(pH9).

Ig Type

Mouse IgG1

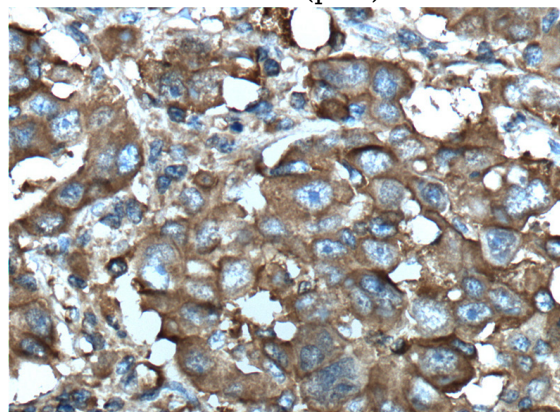
Applications

ELISA, WB, IF, IHC

Dilutions

Recommended Dilution:

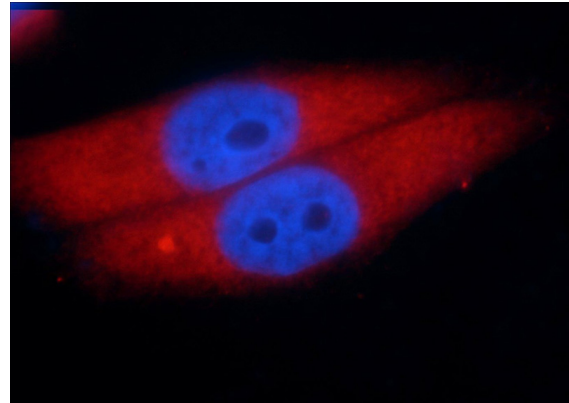
WB: 1:5000-1:50000



Aldolase C antibody

Catalog Number: 107111

Immunohistochemistry of paraffin-embedded human liver cancer tissue slide using Catalog No:107571(ALDoc Antibody) at dilution of 1:200 (under 40x lens). heat mediated antigen retrieved with Tris-EDTA buffer(pH9).



Immunofluorescent analysis of HepG2 cells using Catalog No:107571(ALDoc Antibody) at dilution of 1:50 and Rhodamine-Goat anti-Mouse IgG