

AKT1 antibody

Catalog Number: 107107

Product name

AKT1 antibody

WB: 1:500-1:5000

IP: 1:200-1:2000

Specificity

Human, Mouse, Rat; other species not tested.

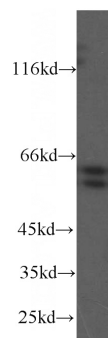
IHC: 1:20-1:200

IF: 1:20-1:200

Antibody description

AKT1 Mouse Monoclonal antibody. Positive IP detected in mouse brain tissue. Positive WB detected in HeLa cells, rat liver tissue. Positive IHC detected in human cervical cancer tissue, human breast cancer tissue. Positive IF detected in MCF-7 cells. Positive FC detected in MCF-7 cells. Observed molecular weight by Western-blot: 62 kDa

Validations



Preparation

This antibody was obtained by immunization of AKT1 recombinant protein (Accession Number: NM_001382430). Purification method: .

HeLa cells were subjected to SDS PAGE followed by western blot with Catalog No:107567(AKT antibody) at dilution of 1:1000

Formulation

PBS with 0.02% sodium azide and 50% glycerol pH 7.3.

Storage

Store at -20°C. DO NOT ALIQUOT

Clonality

Monoclonal

Ig Type

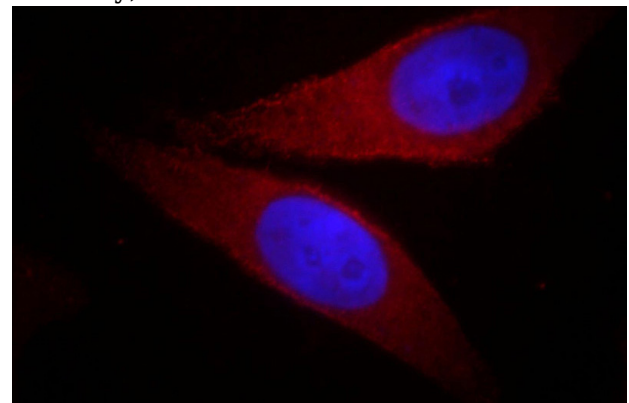
Mouse IgG1

Applications

ELISA, WB, IF, IHC, FC, IP

Dilutions

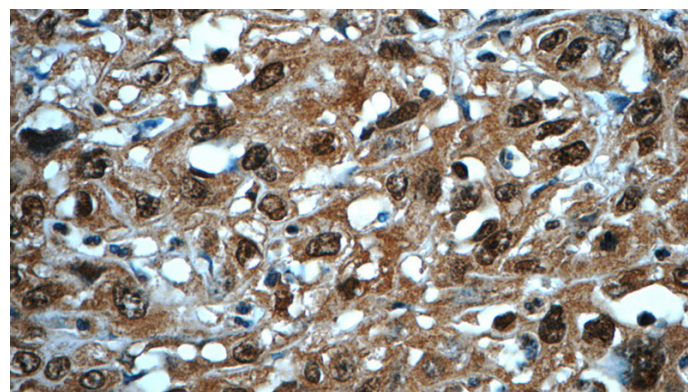
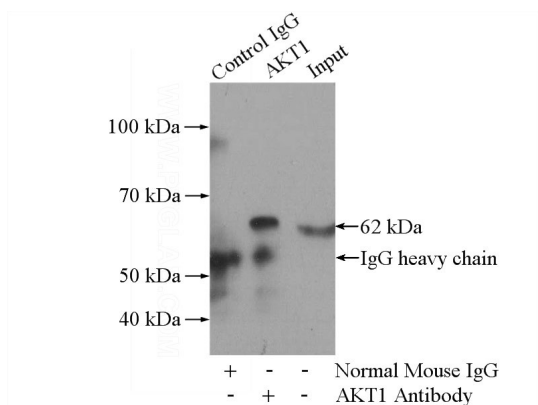
Recommended Dilution:



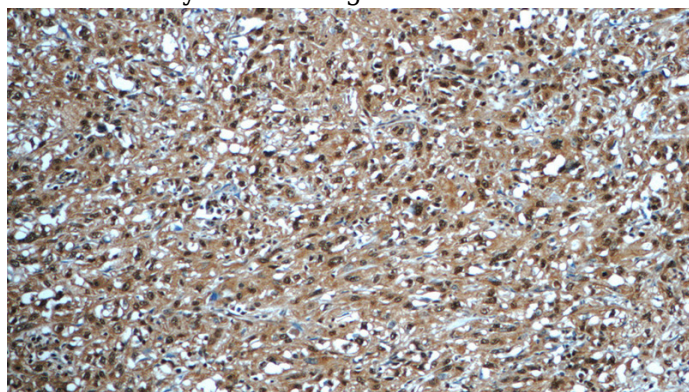
Immunofluorescent analysis of MCF-7 cells, using AKT1 antibody Catalog No: at 1:50 dilution and Rhodamine-labeled goat anti-mouse IgG (red). Blue pseudocolor = DAPI (fluorescent DNA dye).

AKT1 antibody

Catalog Number: 107107

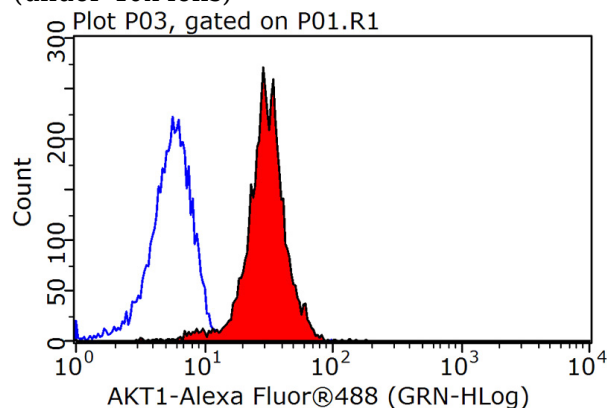


IP Result of anti-AKT (IP:Catalog No:107567, 5ug; Detection:Catalog No:107567 1:600) with mouse brain tissue lysate 3440ug.



Immunohistochemistry of paraffin-embedded human cervical cancer tissue slide using Catalog No:107567(AKT Antibody) at dilution of 1:50 (under 10x lens)

Immunohistochemistry of paraffin-embedded human cervical cancer tissue slide using Catalog No:107567(AKT Antibody) at dilution of 1:50 (under 40x lens)



1X10⁶ MCF-7 cells were stained with 0.2ug AKT antibody (Catalog No:107567, red) and control antibody (blue). Fixed with 90% MeOH blocked with 3% BSA (30 min). Alexa Fluor 488-conjugated AffiniPure Goat Anti-Mouse IgG(H+L) with dilution 1:1500.