

beta Tubulin antibody



Catalog Number: 107089

Product name

beta Tubulin antibody

WB: 1:2000-1:20000

IP: 1:500-1:5000

Specificity

Human, Mouse, Rat; other species not tested.

IHC: 1:20-1:200

IF: 1:20-1:200

Antibody description

beta Tubulin Mouse Monoclonal antibody. Positive WB detected in RAW 264.7 cells. Positive IP detected in HeLa cells. Positive IF detected in HepG2 cells. Positive IHC detected in human brain tissue, human breast cancer tissue, rat brain tissue. Observed molecular weight by Western-blot: 50-55 kDa

Preparation

This antibody was obtained by immunization of beta Tubulin recombinant protein (Accession Number: NM_006086). Purification method: Protein A purified.

Formulation

PBS with 0.02% sodium azide and 50% glycerol pH 7.3.

Storage

Store at -20°C. DO NOT ALIQUOT

Clonality

Monoclonal

Ig Type

Mouse IgG2a

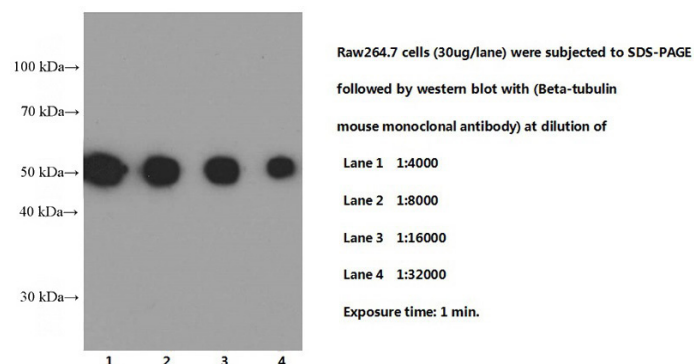
Applications

ELISA, WB, IHC, IF, IP

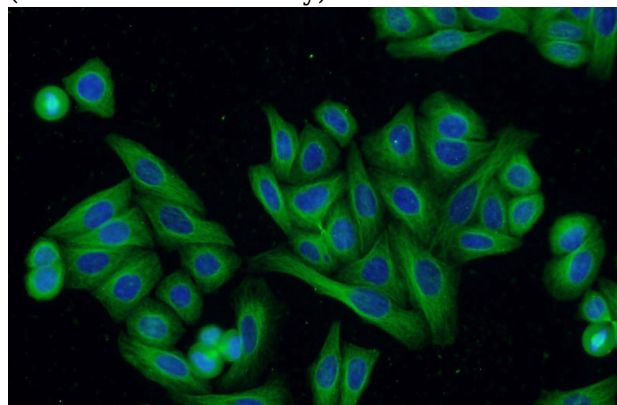
Dilutions

Recommended Dilution:

Validations



RAW 264.7 cells were subjected to SDS PAGE followed by western blot with Catalog No:117308 (Tubulin-beta Antibody) at different dilutions.

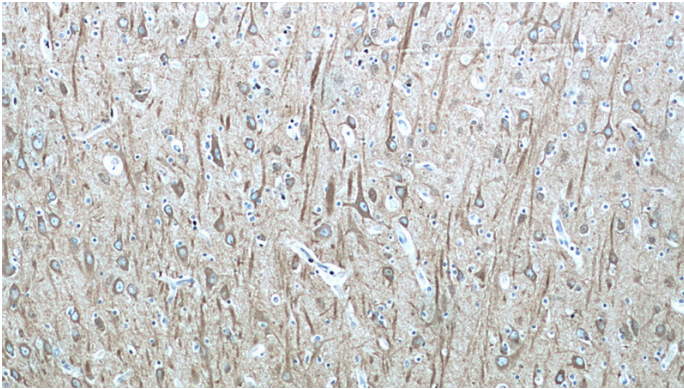


Immunofluorescent analysis of HepG2 cells using Catalog No:117308(Tubulin-beta Antibody) at dilution of 1:50 and Alexa Fluor 488-conjugated AffiniPure Goat Anti-Mouse IgG(H+L)

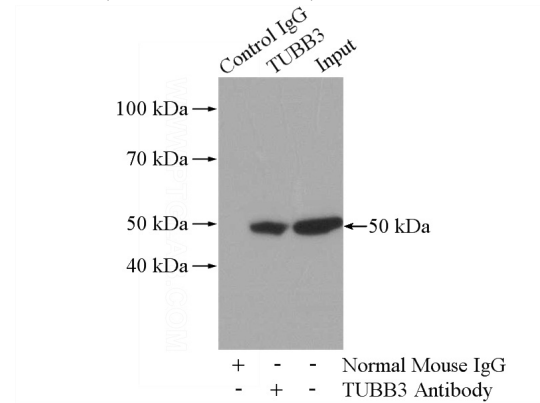
beta Tubulin antibody



Catalog Number: 107089



Immunohistochemistry of paraffin-embedded human brain tissue slide using Catalog No:117308(Tubulin-beta Antibody) at dilution of 1:400 (under 40x lens)



IP Result of anti-Tubulin-beta (IP:Catalog No:117308, 5ug; Detection:Catalog No:117308 1:1000) with HeLa cells lysate 880ug.

