

APOL1 antibody



Catalog Number: 107065

Product name

APOL1 antibody

WB: 1:5000-1:50000

IP: 1:5000-1:50000

Specificity

Human; other species not tested.

IHC: 1:20-1:200

Antibody description

APOL1 Mouse Monoclonal antibody. Positive IHC detected in human liver tissue, human kidney tissue. Positive FC detected in HepG2 cells. Positive IP detected in human plasma tissue. Positive WB detected in human blood tissue. Observed molecular weight by Western-blot: 44 kDa

Preparation

This antibody was obtained by immunization of APOL1 recombinant protein (Accession Number: BC017331). Purification method: Protein A purified.

Formulation

PBS with 0.02% sodium azide and 50% glycerol pH 7.3.

Storage

Store at -20°C. DO NOT ALIQUOT

Clonality

Monoclonal

Ig Type

Mouse IgG2a

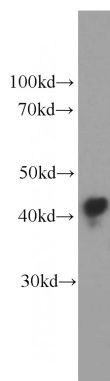
Applications

ELISA, WB, IHC, FC, IP

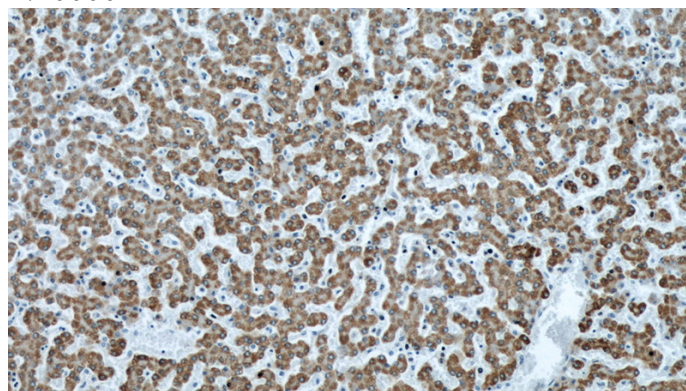
Dilutions

Recommended Dilution:

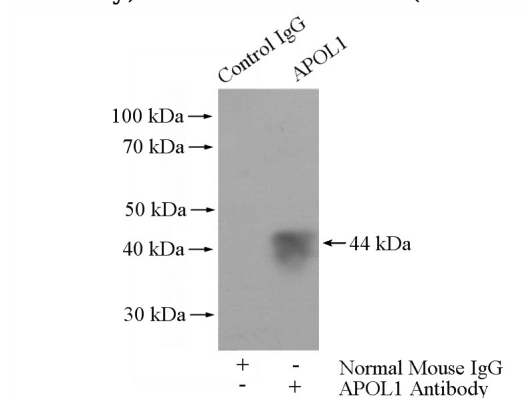
Validations



human blood tissue were subjected to SDS PAGE followed by western blot with Catalog No:107065(APOL1 antibody) at dilution of 1:20000



Immunohistochemical of paraffin-embedded human liver using Catalog No:107065(APOL1 antibody) at dilution of 1:500 (under 10x lens)

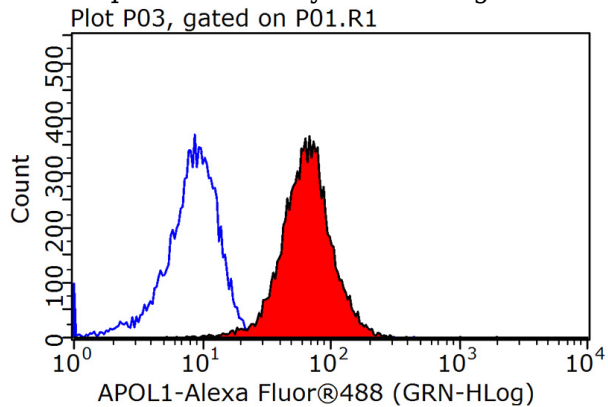


APOL1 antibody



Catalog Number: 107065

IP Result of anti-APOL1 (IP:Catalog No:107065, 5ug; Detection:Catalog No:107065 1:10000) with human plasma tissue lysate 4000ug.



1X10⁶ HepG2 cells were stained with 0.2ug APOL1 antibody (Catalog No:107065, red) and control antibody (blue). Fixed with 90% MeOH blocked with 3% BSA (30 min). Alexa Fluor 488-conjugated AffiniPure Goat Anti-Mouse IgG(H+L) with dilution 1:1000.