

CD146/MCAM antibody



Catalog Number: 107045

Product name

CD146/MCAM antibody

Specificity

Human; other species not tested.

Antibody description

CD146/MCAM Mouse Monoclonal antibody. Positive FC detected in HeLa cells. Positive IHC detected in human placenta tissue. Positive WB detected in A375 cells, HeLa cells, HepG2 cells. Observed molecular weight by Western-blot: 120 kDa

Preparation

This antibody was obtained by immunization of CD146/MCAM recombinant protein (Accession Number: NM_006500). Purification method: Protein G purified.

Formulation

PBS with 0.02% sodium azide and 50% glycerol pH 7.3.

Storage

Store at -20°C. DO NOT ALIQUOT

Clonality

Monoclonal

Ig Type

Mouse IgG1

Applications

ELISA, WB, IHC, FC

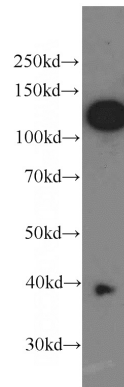
Dilutions

Recommended Dilution:

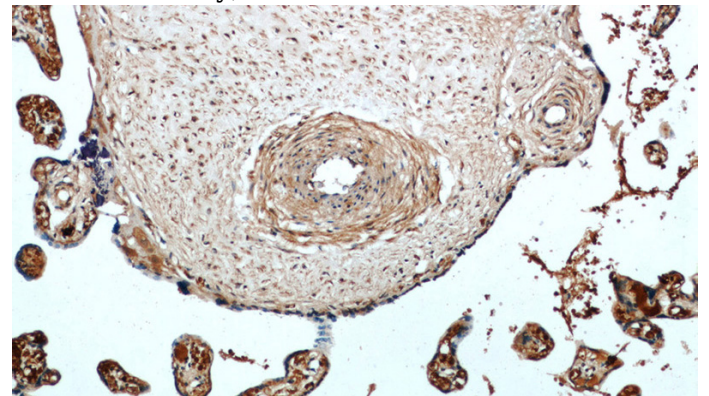
WB: 1:500-1:5000

IHC: 1:20-1:200

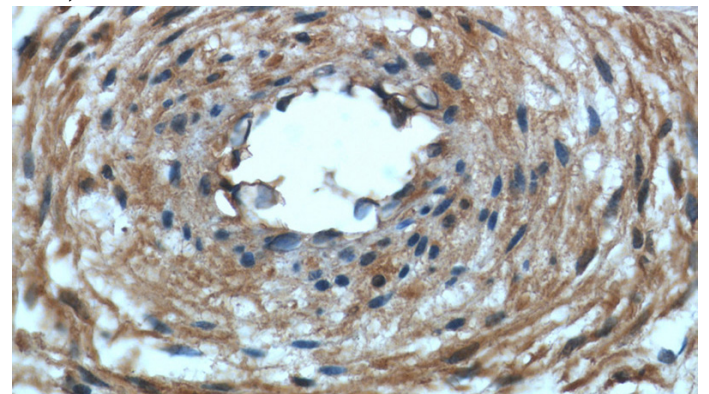
Validations



A375 cells were subjected to SDS PAGE followed by western blot with Catalog No:107045(CD146, MCAM antibody) at dilution of 1:1000



Immunohistochemical of paraffin-embedded human placenta using Catalog No:107045(CD146, MCAM antibody) at dilution of 1:200 (under 10x lens)

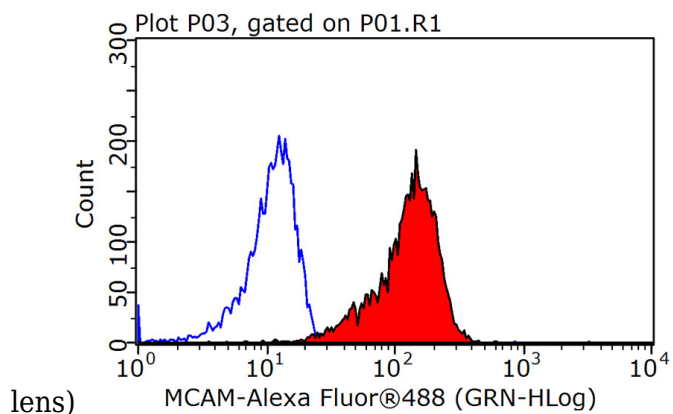


Immunohistochemical of paraffin-embedded human placenta using Catalog No:107045(CD146, MCAM antibody) at dilution of 1:200 (under 40x lens)

CD146/MCAM antibody



Catalog Number: 107045



1X10⁶ HeLa cells were stained with 0.2ug CD146, MCAM antibody (Catalog No:107045, red) and control antibody (blue). Fixed with 90% MeOH blocked with 3% BSA (30 min). Alexa Fluor 488-conjugated AffiniPure Goat Anti-Mouse IgG(H+L) with dilution 1:100.