

BORIS antibody



Catalog Number: 107020

Product name

BORIS antibody

Specificity

Human, Mouse; other species not tested.

Antibody description

BORIS Mouse Monoclonal antibody. Positive WB detected in Hela cells, SMMC-7721 cells. Positive IF detected in MCF-7 cells, Hela cells. Observed molecular weight by Western-blot: 75kd

Preparation

This antibody was obtained by immunization of BORIS recombinant protein (Accession Number: NM_001269040). Purification method: Caprylic acid/ammonium sulfate precipitation.

Formulation

PBS with 0.1% sodium azide and 50% glycerol pH 7.3.

Storage

Store at -20°C. DO NOT ALIQUOT

Clonality

Monoclonal

Ig Type

Mouse IgG1

Applications

ELISA, WB, IF

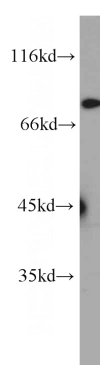
Dilutions

Recommended Dilution:

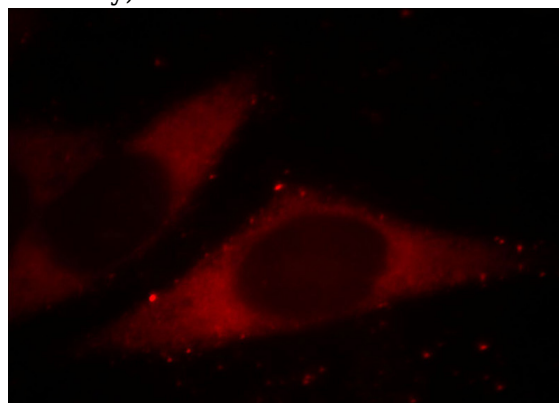
WB: 1:500-1:5000

IF: 1:10-1:100

Validations



HeLa cells were subjected to SDS PAGE followed by western blot with Catalog No:107020(BORIS antibody) at dilution of 1:1000



Immunofluorescent analysis of MCF-7 cells, using CTCFL antibody Catalog No: at 1:25 dilution and Rhodamine-labeled goat anti-mouse IgG (red).