

FGF16-Specific antibody



Catalog Number: 107017

Product name

FGF16-Specific antibody

Specificity

Human, Mouse, Rat; other species not tested.

Antibody description

FGF16-Specific Rabbit Polyclonal antibody. Positive WB detected in human heart tissue. Positive IHC detected in human heart tissue, human kidney tissue, human lung tissue, human placenta tissue, human spleen tissue. Observed molecular weight by Western-blot: 20-24 kDa

Preparation

This antibody was obtained by immunization of Peptide (Accession Number: NM_003868). Purification method: Antigen affinity purified.

Formulation

PBS with 0.02% sodium azide and 50% glycerol pH 7.3.

Storage

Store at -20°C. DO NOT ALIQUOT

Clonality

Polyclonal

Ig Type

Rabbit IgG

Applications

ELISA, IHC, WB

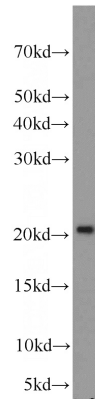
Dilutions

Recommended Dilution:

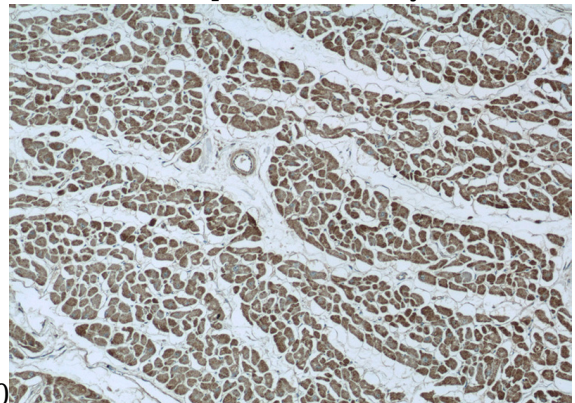
WB: 1:200-1:1000

IHC: 1:20-1:200

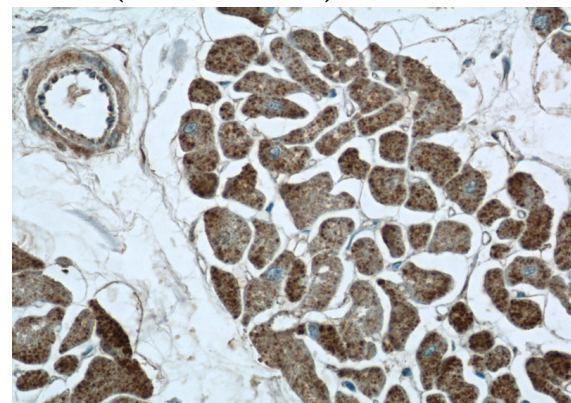
Validations



human heart tissue were subjected to SDS PAGE followed by western blot with Catalog No:110632(FGF16-Specific antibody) at dilution of



Immunohistochemistry of paraffin-embedded human heart tissue slide using Catalog No:110632(FGF16-Specific Antibody) at dilution of 1:50 (under 10x lens)



Immunohistochemistry of paraffin-embedded human heart tissue slide using Catalog

FGF16-Specific antibody



Catalog Number: 107017

No:110632(FGF16-Specific Antibody) at dilution of 1:50 (under 40x lens)