

DISC1-long-specific antibody



Catalog Number: 107014

Product name

DISC1-long-specific antibody

WB: 1:200-1:1000

IP: 1:200-1:1000

Specificity

Human, Mouse; other species not tested.

IHC: 1:20-1:200

IF: 1:20-1:200

Antibody description

DISC1-long-specific Rabbit Polyclonal antibody. Positive WB detected in SH-SY5Y cells, human kidney tissue, mouse brain tissue, mouse kidney tissue. Positive IP detected in mouse brain tissue. Positive IHC detected in human brain tissue. Positive IF detected in MDCK cells. Observed molecular weight by Western-blot: 60kDa, 62 kDa, 75- 85 kDa

Preparation

This antibody was obtained by immunization of Peptide (Accession Number: NM_018662). Purification method: Antigen affinity purified.

Formulation

PBS with 0.02% sodium azide and 50% glycerol pH 7.3.

Storage

Store at -20°C. DO NOT ALIQUOT

Clonality

Polyclonal

Ig Type

Rabbit IgG

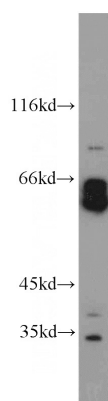
Applications

ELISA, WB, IHC, IF, IP

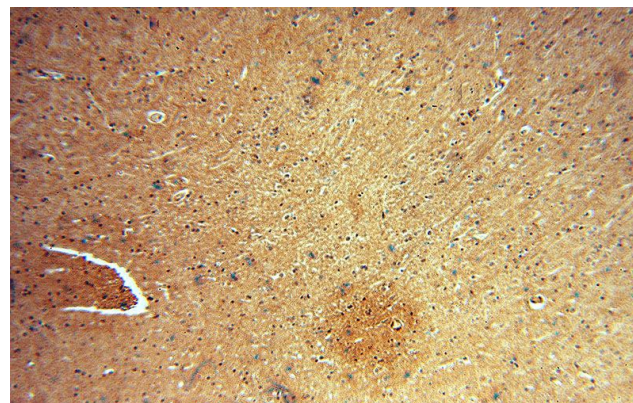
Dilutions

Recommended Dilution:

Validations



SH-SY5Y cells were subjected to SDS PAGE followed by western blot with Catalog No:109978(DISC1-long-specific antibody) at dilution of 1:200

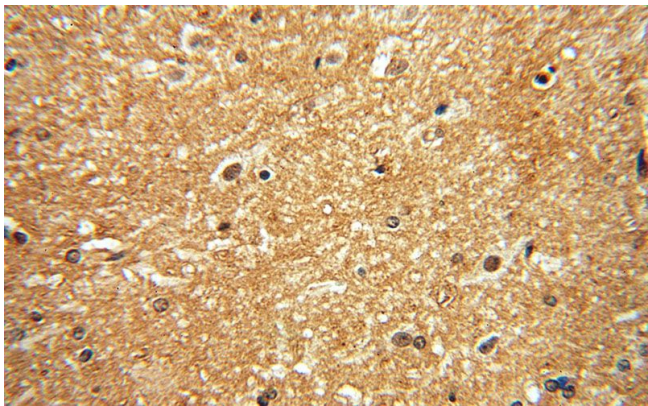


Immunohistochemical of paraffin-embedded human brain using Catalog No:109978(DISC1-long-specific antibody) at dilution of 1:50 (under 10x lens)

DISC1-long-specific antibody

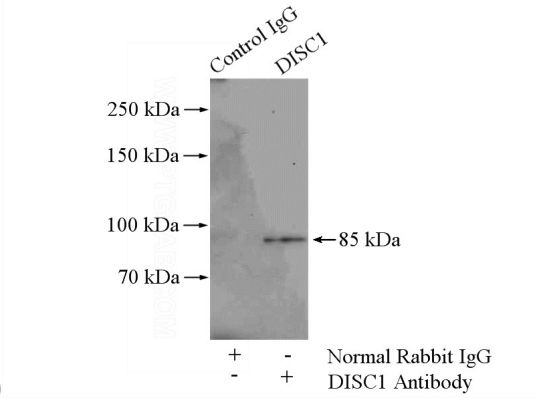


Catalog Number: 107014

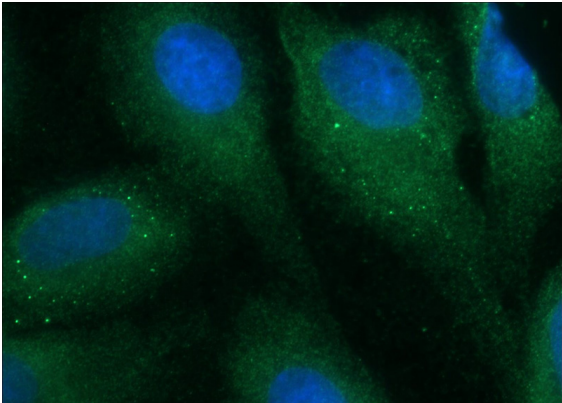


Immunohistochemical of paraffin-embedded human brain using Catalog No:109978(DISC1-long-specific antibody) at dilution of 1:50 (under

40x lens)



IP Result of anti-DISC1-long-specific (IP:Catalog No:109978, 4ug; Detection:Catalog No:109978 1:300) with mouse brain tissue lysate 2560ug.



Immunofluorescent analysis of MDCK cells using Catalog No:109978(DISC1-long-specific Antibody) at dilution of 1:50 and Alexa Fluor 488-conjugated AffiniPure Goat Anti-Rabbit IgG(H+L)