

Cytokeratin 7-specific antibody



Catalog Number: 107012

Product name

Cytokeratin 7-specific antibody

Specificity

Human; other species not tested.

Antibody description

Cytokeratin 7-specific Rabbit Polyclonal antibody. Positive IHC detected in human ovary tumor tissue, human breast cancer tissue, human cervical cancer tissue, human liver cancer tissue, human liver tissue, human lung cancer tissue. Positive IF detected in HepG2 cells, Hela cells. Positive IP detected in HepG2 cells. Positive WB detected in A431 cells, HeLa cells, HepG2 cells. Observed molecular weight by Western-blot: 54 kDa

Preparation

This antibody was obtained by immunization of Peptide (Accession Number: NM_005556). Purification method: Antigen affinity purified.

Formulation

PBS with 0.02% sodium azide and 50% glycerol pH 7.3.

Storage

Store at -20°C. DO NOT ALIQUOT

Clonality

Polyclonal

Ig Type

Rabbit IgG

Applications

ELISA, WB, IF, IP, IHC

Dilutions

Recommended Dilution:

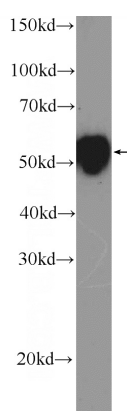
WB: 1:500-1:5000

IP: 1:500-1:5000

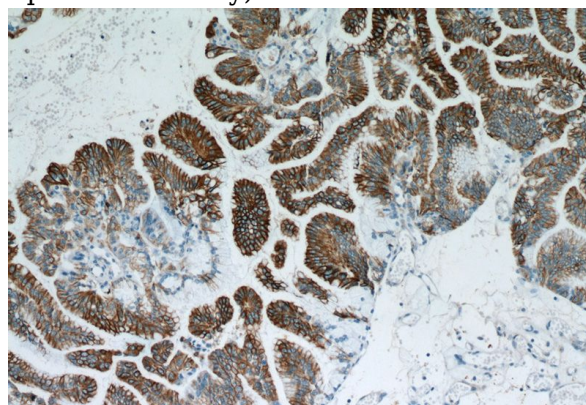
IHC: 1:20-1:200

IF: 1:20-1:200

Validations



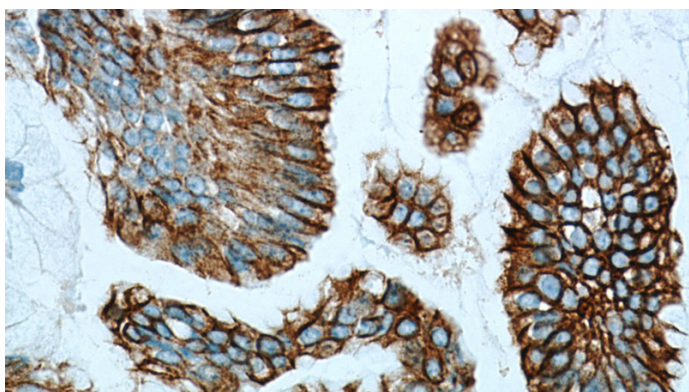
A431 cells were subjected to SDS PAGE followed by western blot with Catalog No:109811(CK7-Specific Antibody) at dilution of 1:1000



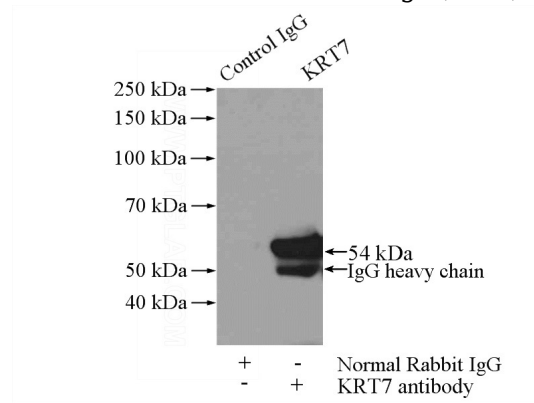
Immunohistochemical of paraffin-embedded human ovary tumor using Catalog No:109811(KRT7-Specific antibody) at dilution of 1:50 (under 10x lens). Heat mediated antigen retrieved with Citric acid buffer, pH6.0

Cytokeratin 7-specific antibody

Catalog Number: 107012



Immunofluorescent analysis of HepG2 cells using Catalog No:109811(CK7-Specific Antibody) at dilution of 1:50 and Alexa Fluor 488-conjugated AffiniPure Goat Anti-Rabbit IgG(H+L)



IP Result of anti-CK7-Specific (IP:Catalog No:109811, 4ug; Detection:Catalog No:109811 1:1000) with HepG2 cells lysate 3600ug.

Immunohistochemical of paraffin-embedded human ovary tumor using Catalog No:109811(KRT7-Specific antibody) at dilution of 1:50 (under 40x lens). Heat mediated antigen retrieved with Citric acid buffer, pH6.0

