

Cytokeratin 1-specific antibody



Catalog Number: 107009

Product name

Cytokeratin 1-specific antibody

IP: 1:200-1:2000

IHC: 1:20-1:200

Specificity

Human, Mouse; other species not tested.

IF: 1:20-1:200

Antibody description

Cytokeratin 1-specific Rabbit Polyclonal antibody. Positive IHC detected in human skin tissue, human cervix tissue, human lung cancer tissue. Positive IF detected in A431 cells. Positive IP detected in A431 cells. Positive WB detected in mouse skin tissue, A375 cells, A431 cells. Observed molecular weight by Western-blot: 67kd

Preparation

This antibody was obtained by immunization of Peptide (Accession Number: NM_006121). Purification method: Antigen affinity purified.

Formulation

PBS with 0.02% sodium azide and 50% glycerol pH 7.3.

Storage

Store at -20°C. DO NOT ALIQUOT

Clonality

Polyclonal

Ig Type

Rabbit IgG

Applications

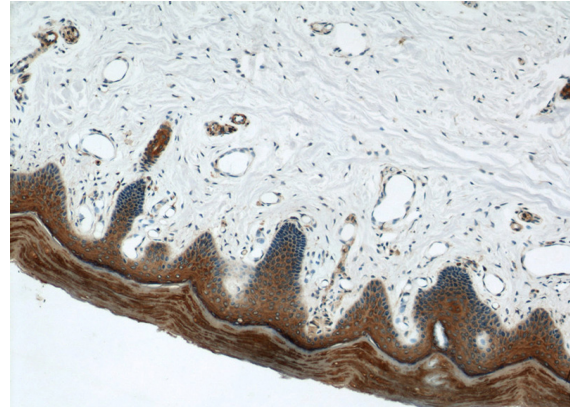
ELISA, IP, IF, WB, IHC

Dilutions

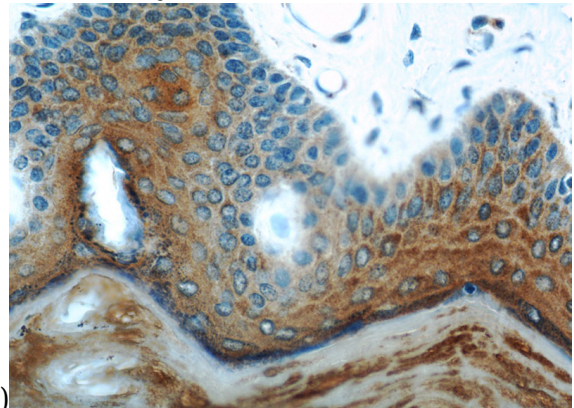
Recommended Dilution:

WB: 1:500-1:5000

Validations

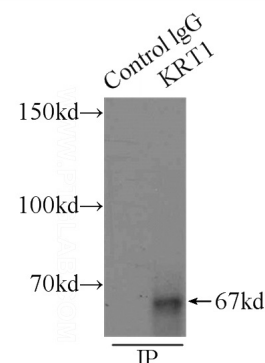


Immunohistochemical of paraffin-embedded human skin using Catalog No:109804(KRT1-specific antibody) at dilution of 1:100 (under 10x



lens)

Immunohistochemical of paraffin-embedded human skin using Catalog No:109804(KRT1-specific antibody) at dilution of 1:100 (under 40x



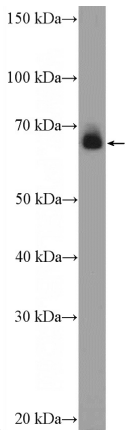
lens)

Cytokeratin 1-specific antibody



Catalog Number: 107009

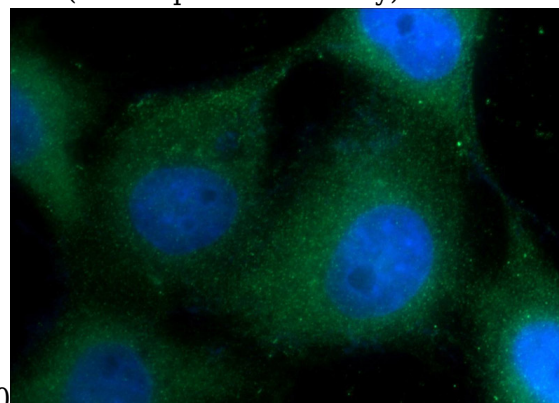
IP Result of anti-KRT1-specific (IP:Catalog No:109804, 3ug; Detection:Catalog No:109804



1:500) with A431 cells lysate 3500ug.

mouse skin tissue were subjected to SDS PAGE followed by western blot with Catalog

No:109804(KRT1-specific Antibody) at dilution of



1:1000

Immunofluorescent analysis of A431 cells using Catalog No:109804(KRT1-specific Antibody) at dilution of 1:50 and Alexa Fluor 488-conjugated AffiniPure Goat Anti-Rabbit IgG(H+L)