

Cytokeratin 17-Specific antibody



Catalog Number: 107007

Product name

Cytokeratin 17-Specific antibody

WB: 1:500-1:5000

IP: 1:500-1:5000

Specificity

Human, Mouse, Rat; other species not tested.

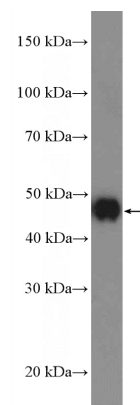
IHC: 1:20-1:200

IF: 1:50-1:500

Antibody description

Cytokeratin 17-Specific Rabbit Polyclonal antibody. Positive IHC detected in human cervical cancer tissue, human lung cancer tissue. Positive IF detected in HeLa cells. Positive FC detected in HeLa cells. Positive WB detected in A431 cells, HEK-293 cells, HeLa cells, mouse skin tissue. Positive IP detected in A431 cells. Observed molecular weight by Western-blot: 48 kDa

Validations



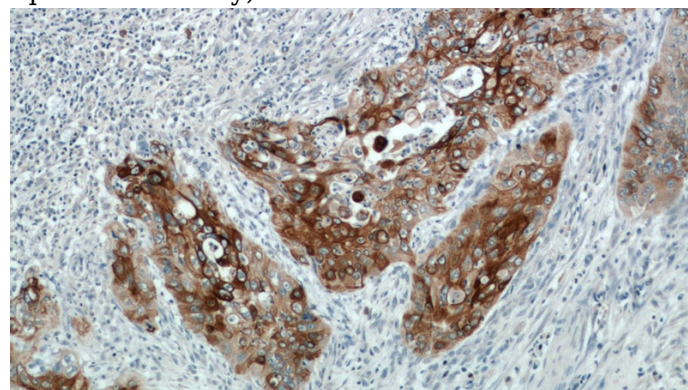
Preparation

This antibody was obtained by immunization of Peptide (Accession Number: NM_000422). Purification method: Antigen affinity purified.

A431 cells were subjected to SDS PAGE followed by western blot with Catalog No:109798(KRT17-Specific Antibody) at dilution of 1:1000

Formulation

PBS with 0.02% sodium azide and 50% glycerol pH 7.3.



Storage

Store at -20°C. DO NOT ALIQUOT

Clonality

Polyclonal

Ig Type

Rabbit IgG

Immunohistochemical of paraffin-embedded human cervical cancer using Catalog No:109798(KRT17-Specific antibody) at dilution of 1:50 (under 10x lens)

Applications

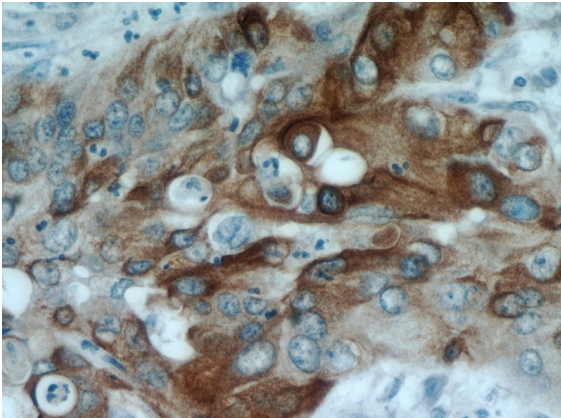
ELISA, IHC, FC, IP, IF, WB

Dilutions

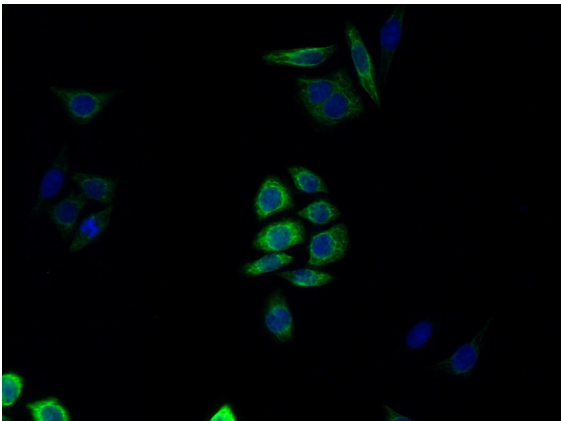
Recommended Dilution:

Cytokeratin 17-Specific antibody

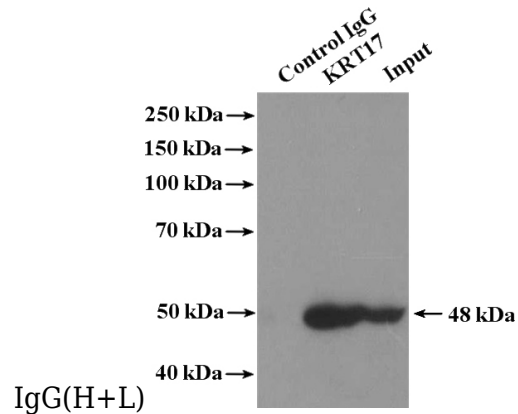
Catalog Number: 107007



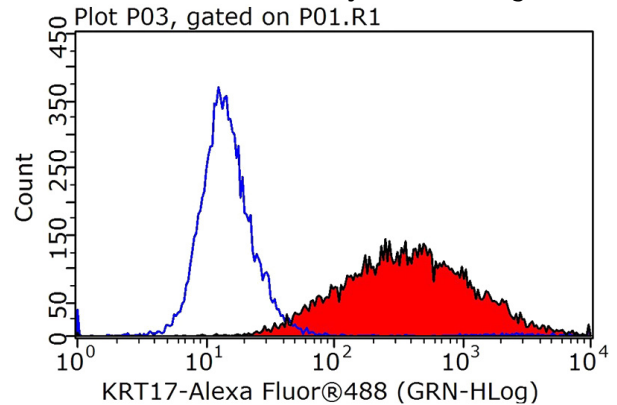
Immunohistochemical of paraffin-embedded human cervical cancer using Catalog No:109798(KRT17-Specific antibody) at dilution of 1:50 (under 40x lens)



Immunofluorescent analysis of (-20oc Ethanol) fixed HeLa cells using Catalog No:109798(KRT17-Specific Antibody) at dilution of 1:50 and Alexa Fluor 488-conjugated AffiniPure Goat Anti-Rabbit



IP Result of anti-KRT17-Specific (IP:Catalog No:109798, 4ug; Detection:Catalog No:109798 1:1000) with A431 cells lysate 1200ug.



1X10⁶ HeLa cells were stained with 0.2ug KRT17-Specific antibody (Catalog No:109798, red) and control antibody (blue). Fixed with 90% MeOH blocked with 3% BSA (30 min). Alexa Fluor 488-conjugated AffiniPure Goat Anti-Rabbit IgG(H+L) with dilution 1:1000.