

# Claudin 4-specific antibody



Catalog Number: 107003

## Product name

Claudin 4-specific antibody

IP: 1:200-1:1000

IHC: 1:20-1:200

## Specificity

Human, Mouse, Rat; other species not tested.

## Antibody description

Claudin 4-specific Rabbit Polyclonal antibody. Positive WB detected in mouse small intestine tissue, human liver tissue, human placenta tissue. Positive IP detected in human placenta tissue. Positive IHC detected in human breast cancer tissue, human ovary tumor tissue. Observed molecular weight by Western-blot: 22 kDa

## Preparation

This antibody was obtained by immunization of Peptide (Accession Number: NM\_001305). Purification method: Antigen affinity purified.

## Formulation

PBS with 0.02% sodium azide and 50% glycerol pH 7.3.

## Storage

Store at -20°C. DO NOT ALIQUOT

## Clonality

Polyclonal

## Ig Type

Rabbit IgG

## Applications

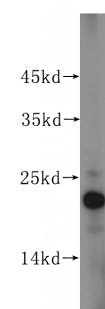
ELISA, WB, IHC, IP

## Dilutions

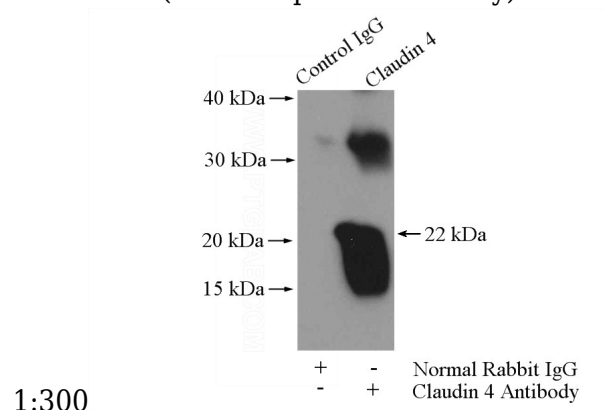
Recommended Dilution:

WB: 1:200-1:2000

## Validations

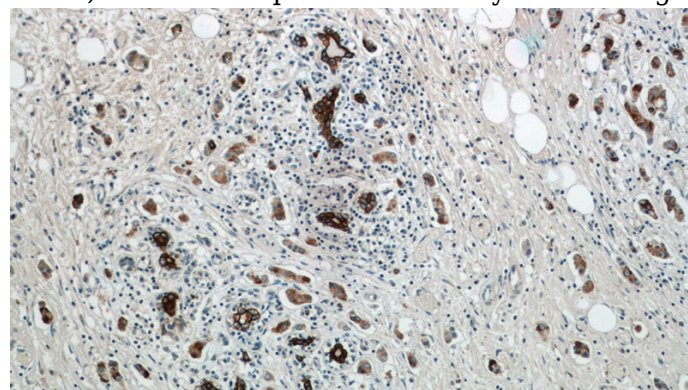


mouse small intestine tissue were subjected to SDS PAGE followed by western blot with Catalog No:109342(CLDN4-specific antibody) at dilution of



1:300

IP Result of anti-Claudin 4-specific (IP:Catalog No:109342, 4ug; Detection:Catalog No:109342 1:300) with human placenta tissue lysate 4400ug.



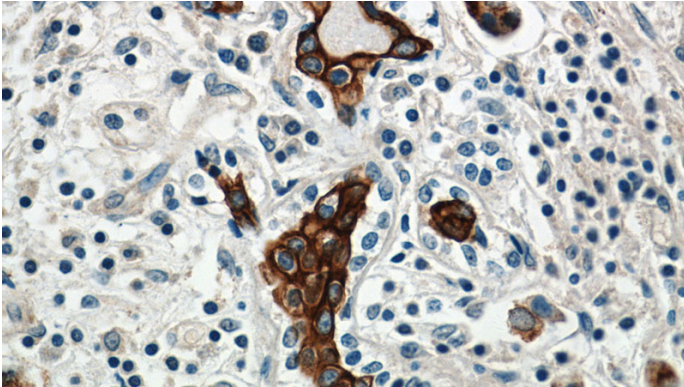
Immunohistochemistry of paraffin-embedded human breast cancer tissue slide using Catalog

# Claudin 4-specific antibody

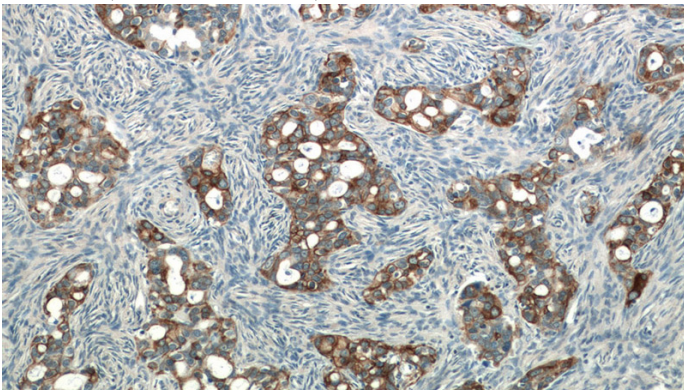
Catalog Number: 107003

---

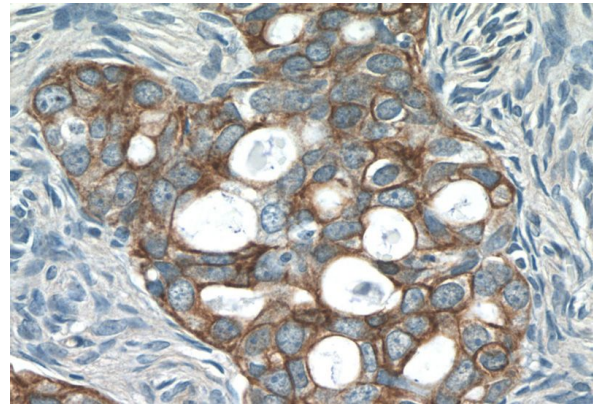
No:109342(Claudin 4-specific Antibody) at dilution of 1:50 (under 10x lens)



Immunohistochemistry of paraffin-embedded human breast cancer tissue slide using Catalog No:109342(Claudin 4-specific Antibody) at dilution of 1:50 (under 40x lens)



Immunohistochemistry of paraffin-embedded human ovary tumor tissue slide using Catalog No:109342(Claudin 4-specific Antibody) at dilution of 1:50 (under 10x lens)



Immunohistochemistry of paraffin-embedded human ovary tumor tissue slide using Catalog No:109342(Claudin 4-specific Antibody) at dilution of 1:50 (under 40x lens)