

CCR2-specific antibody



Catalog Number: 107002

Product name

CCR2-specific antibody

Specificity

Human; other species not tested.

Antibody description

CCR2-specific Rabbit Polyclonal antibody. Positive WB detected in Jurkat cells, A431 cells. Positive FC detected in Jurkat cells. Positive IHC detected in human kidney tissue, human ovary tumor tissue. Observed molecular weight by Western-blot: 42 kDa

Preparation

This antibody was obtained by immunization of Peptide (Accession Number: NM_000647). Purification method: Antigen affinity purified.

Formulation

PBS with 0.02% sodium azide and 50% glycerol pH 7.3.

Storage

Store at -20°C. DO NOT ALIQUOT

Clonality

Polyclonal

Ig Type

Rabbit IgG

Applications

ELISA, WB, IHC, FC

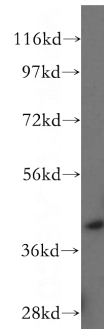
Dilutions

Recommended Dilution:

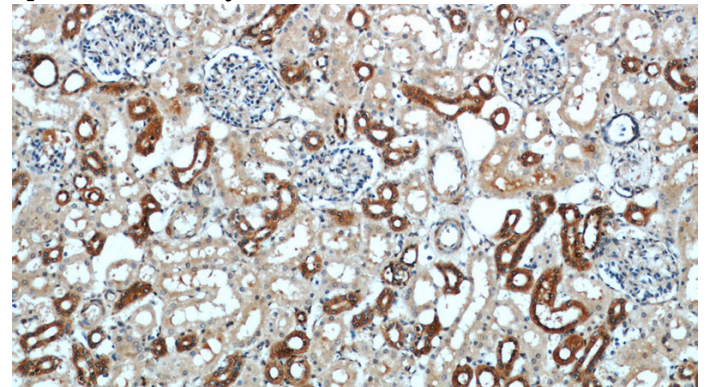
WB: 1:200-1:2000

IHC: 1:20-1:200

Validations

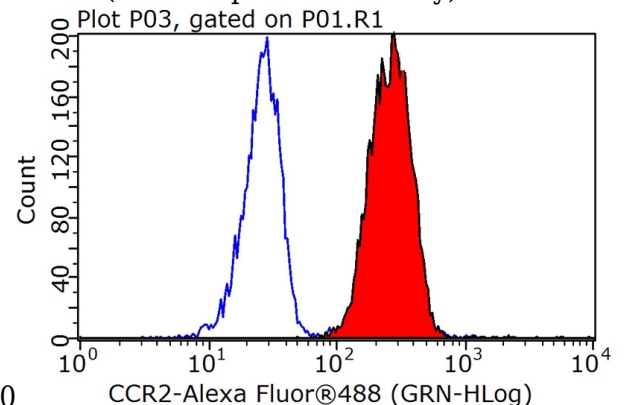


Jurkat cells were subjected to SDS PAGE followed by western blot with Catalog No:109075(CCR2a-specific antibody) at dilution of 1:200



Immunohistochemistry of paraffin-embedded human kidney slide using Catalog No:109075(CCR2a-specific Antibody) at dilution of 1:50

Immunohistochemistry of paraffin-embedded human kidney slide using Catalog No:109075(CCR2a-specific Antibody) at dilution of



1:50

CCR2-specific antibody



Catalog Number: 107002

1X10⁶ Jurkat cells were stained with 0.2ug CCR2a-specific antibody (Catalog No:109075, red) and control antibody (blue). Fixed with 90%

MeOH blocked with 3% BSA (30 min). Alexa Fluor 488-conjugated AffiniPure Goat Anti-Rabbit IgG(H+L) with dilution 1:1000.