

# CCKBR-specific antibody



Catalog Number: 107001

## Product name

CCKBR-specific antibody

## Specificity

Human; other species not tested.

## Antibody description

CCKBR-specific Rabbit Polyclonal antibody.  
Positive IF detected in BxPC-3 cells. Positive WB detected in BxPC-3 cells, human stomach tissue, SGC-7901 cells. Observed molecular weight by Western-blot: 64 kDa or 50 kDa

## Preparation

This antibody was obtained by immunization of Peptide (Accession Number: NM\_176875).  
Purification method: Antigen affinity purified.

## Formulation

PBS with 0.02% sodium azide and 50% glycerol pH 7.3.

## Storage

Store at -20°C. DO NOT ALIQUOT

## Clonality

Polyclonal

## Ig Type

Rabbit IgG

## Applications

ELISA, WB, IF

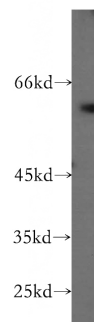
## Dilutions

Recommended Dilution:

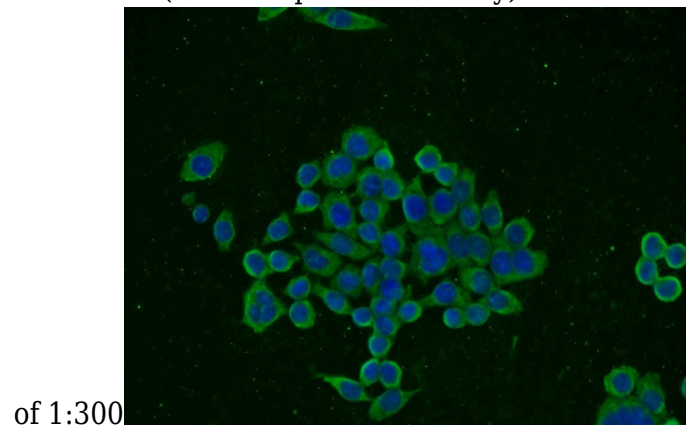
WB: 1:200-1:2000

IF: 1:10-1:100

## Validations



BxPC-3 cells were subjected to SDS PAGE followed by western blot with Catalog No:108998(CCKBR-specific antibody) at dilution



Immunofluorescent analysis of BxPC-3 cells using Catalog No:108998(CCKBR-specific Antibody) at dilution of 1:25 and Alexa Fluor 488-conjugated AffiniPure Goat Anti-Rabbit IgG(H+L)