

OCT2-Specific antibody



Catalog Number: 106993

Product name

OCT2-Specific antibody

Specificity

Human, Mouse, Rat; other species not tested.

Antibody description

OCT2-Specific Rabbit Polyclonal antibody. Positive WB detected in mouse thymus tissue, human brain tissue, human spleen tissue, mouse kidney tissue, Raji cells. Positive IHC detected in human spleen tissue. Observed molecular weight by Western-blot: 55 kDa

Preparation

This antibody was obtained by immunization of Peptide (Accession Number: NM_002698). Purification method: Antigen affinity purified.

Formulation

PBS with 0.02% sodium azide and 50% glycerol pH 7.3.

Storage

Store at -20°C. DO NOT ALIQUOT

Clonality

Polyclonal

Ig Type

Rabbit IgG

Applications

ELISA, WB, IHC

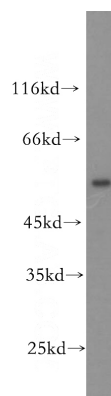
Dilutions

Recommended Dilution:

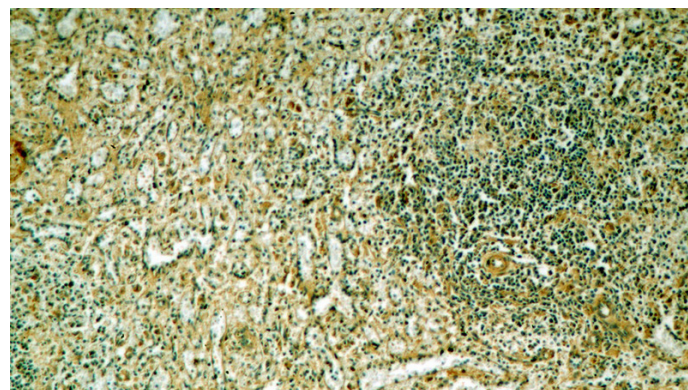
WB: 1:500-1:5000

IHC: 1:20-1:200

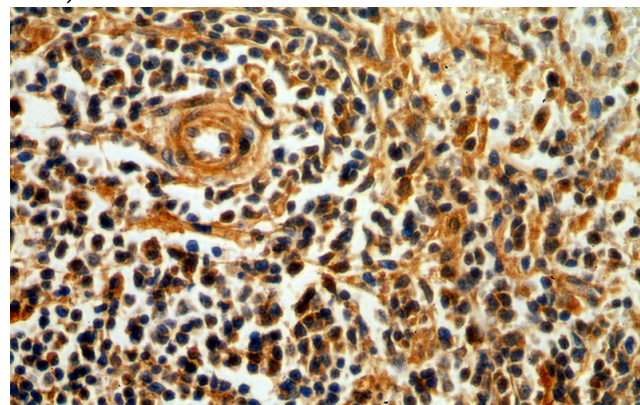
Validations



mouse thymus tissue were subjected to SDS PAGE followed by western blot with Catalog No:113471(POU2F2-Specific antibody) at dilution of 1:300



Immunohistochemical of paraffin-embedded human spleen using Catalog No:113471(POU2F2-Specific antibody) at dilution of 1:100 (under 10x lens)



Immunohistochemical of paraffin-embedded human spleen using Catalog No:113471(POU2F2-

OCT2-Specific antibody



Catalog Number: 106993

Specific antibody) at dilution of 1:100 (under 40x lens)