

Lin28B-specific antibody



Catalog Number: 106988

Product name

Lin28B-specific antibody

IHC: 1:20-1:200

IF: 1:10-1:100

Specificity

Human, Mouse; other species not tested.

Antibody description

Lin28B-specific Rabbit Polyclonal antibody. Positive IF detected in HepG2 cells. Positive IHC detected in human testis tissue, human brain tissue, human kidney tissue, human liver cancer tissue, human lung tissue, human placenta tissue, human spleen tissue. Positive WB detected in Transfected HEK-293 cells.

Preparation

This antibody was obtained by immunization of Peptide (Accession Number: NM_001004317). Purification method: Antigen affinity purified.

Formulation

PBS with 0.02% sodium azide and 50% glycerol pH 7.3.

Storage

Store at -20°C. DO NOT ALIQUOT

Clonality

Polyclonal

Ig Type

Rabbit IgG

Applications

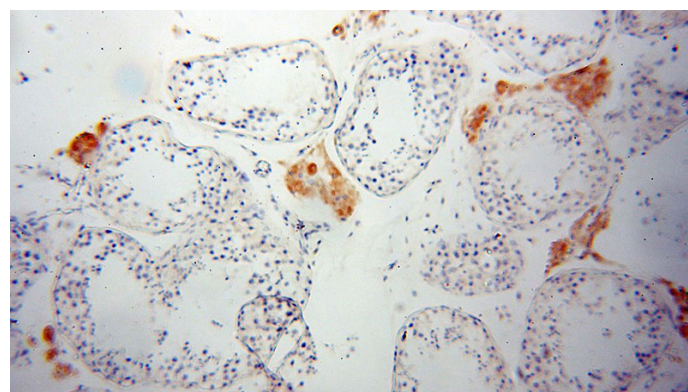
ELISA, IHC, IF, WB

Dilutions

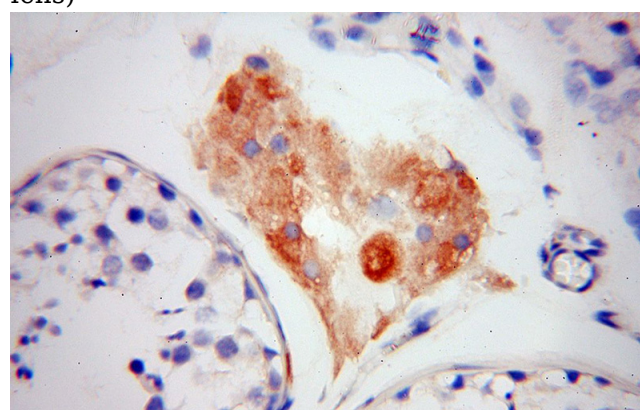
Recommended Dilution:

WB: 1:500-1:5000

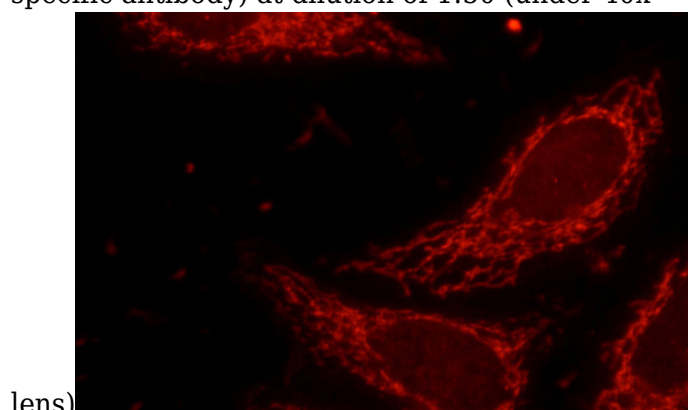
Validations



Immunohistochemical of paraffin-embedded human testis using Catalog No:112234(Lin28B-specific antibody) at dilution of 1:50 (under 10x lens)



Immunohistochemical of paraffin-embedded human testis using Catalog No:112234(Lin28B-specific antibody) at dilution of 1:50 (under 40x lens)



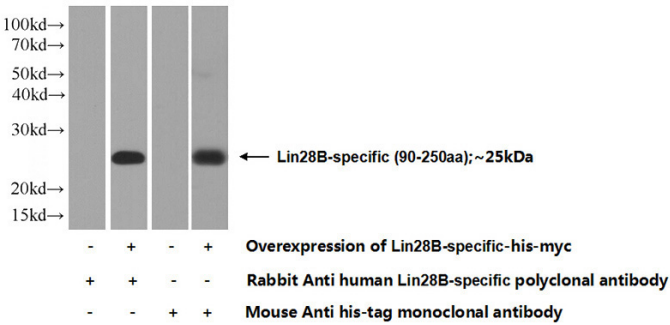
Immunofluorescent analysis of HepG2 cells using

Lin28B-specific antibody



Catalog Number: 106988

Catalog No:112234(Lin28B-specific Antibody) at dilution of 1:25 and Rhodamine-Goat anti-Rabbit IgG



Transfected HEK-293 cells were subjected to SDS PAGE followed by western blot with Catalog No:112234(Lin28B-specific Antibody) at dilution of 1:1000