

# KRT10-specific antibody



Catalog Number: 106986

## Product name

KRT10-specific antibody

## Specificity

human, mouse, rat; other species not tested.

## Antibody description

KRT10-specific Rabbit Polyclonal antibody.  
Positive IHC detected in human lung cancer.

## Preparation

This antibody was obtained by immunization of Peptide (Accession Number: NM\_000421).  
Purification method: Antigen affinity purified.

## Formulation

PBS with 0.1% sodium azide and 50% glycerol pH 7.3.

## Storage

Store at -20°C. DO NOT ALIQUOT

## Clonality

Polyclonal

## Ig Type

Rabbit IgG

## Applications

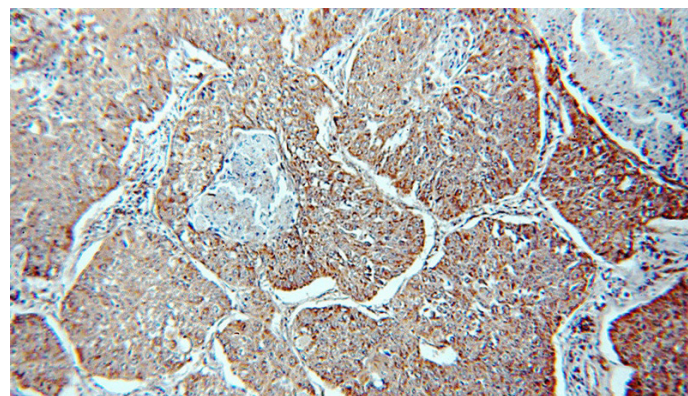
ELISA, IHC

## Dilutions

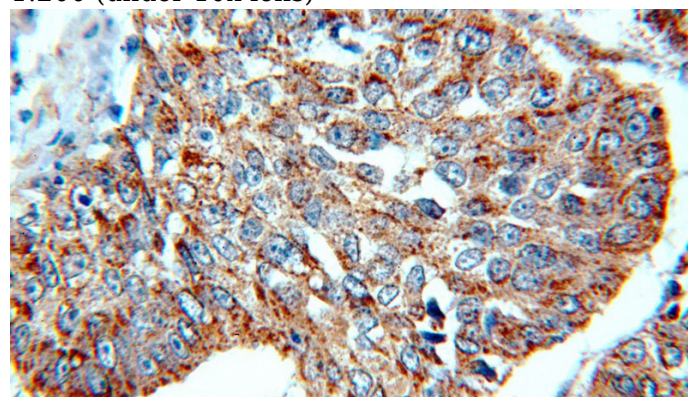
Recommended Dilution:

IHC: 1:20-1:200

## Validations



Immunohistochemical of paraffin-embedded human lung cancer using Catalog No:112126(KRT10-specific antibody) at dilution of 1:200 (under 10x lens)



Immunohistochemical of paraffin-embedded human lung cancer using Catalog No:112126(KRT10-specific antibody) at dilution of 1:200 (under 40x lens)