

KRAS-2B-specific antibody



Catalog Number: 106985

Product name

KRAS-2B-specific antibody

IHC: 1:20-1:200

IF: 1:10-1:100

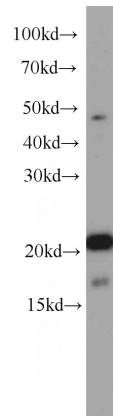
Specificity

Human, Mouse; other species not tested.

Antibody description

KRAS-2B-specific Rabbit Polyclonal antibody. Positive IHC detected in human pancreas cancer tissue, human colon cancer tissue. Positive IF detected in HepG2 cells. Positive FC detected in HepG2 cells. Positive WB detected in mouse brain tissue, MCF7 cells, mouse kidney tissue. Observed molecular weight by Western-blot: 21 kDa

Validations



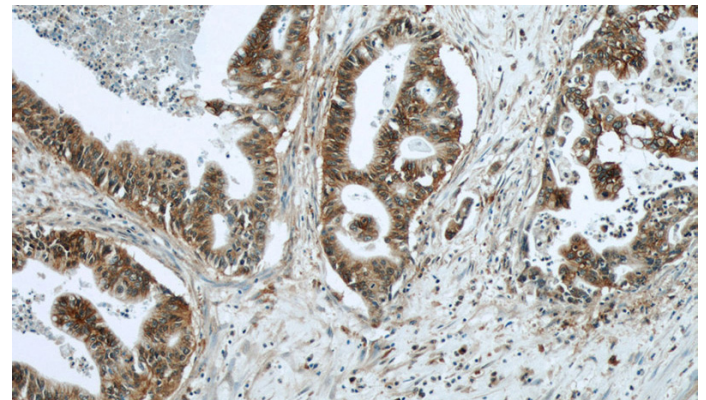
Preparation

This antibody was obtained by immunization of Peptide (Accession Number: NM_004985). Purification method: Antigen affinity purified.

mouse brain tissue were subjected to SDS PAGE followed by western blot with Catalog No:112121(KRAS-2B-specific antibody) at dilution of 1:1000

Formulation

PBS with 0.02% sodium azide and 50% glycerol pH 7.3.



Storage

Store at -20°C. DO NOT ALIQUOT

Clonality

Polyclonal

Ig Type

Rabbit IgG

Applications

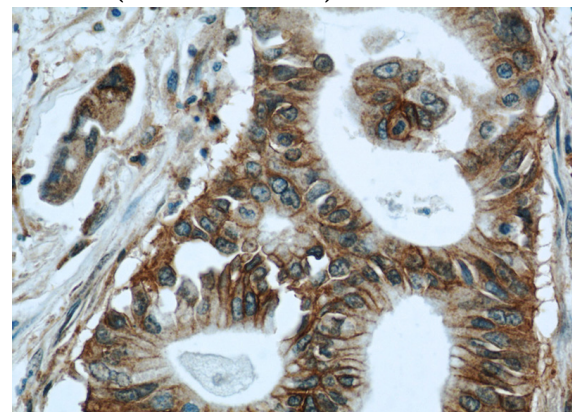
ELISA, WB, IF, IHC, FC

Dilutions

Recommended Dilution:

WB: 1:200-1:2000

Immunohistochemical of paraffin-embedded human pancreas cancer using Catalog No:112121(KRAS-2B-specific antibody) at dilution of 1:50 (under 10x lens)

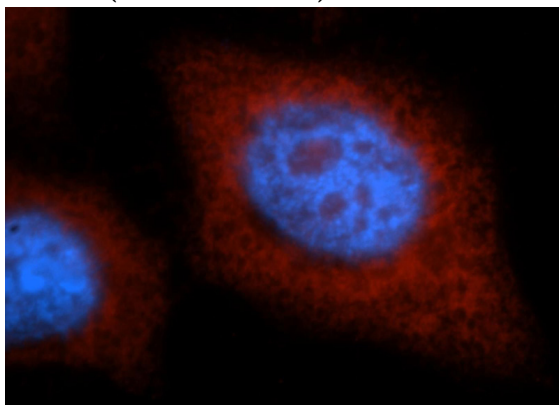


KRAS-2B-specific antibody



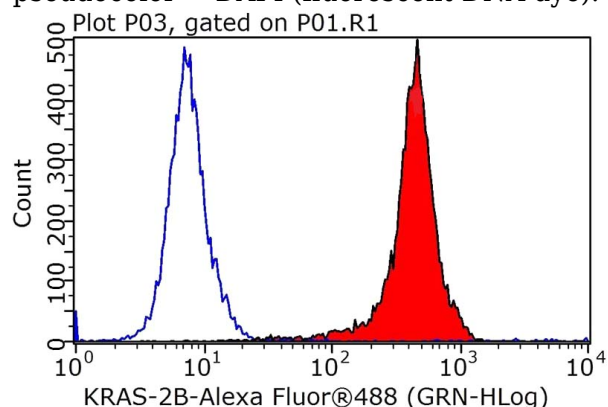
Catalog Number: 106985

Immunohistochemical of paraffin-embedded human pancreas cancer using Catalog No:112121(KRAS-2B-specific antibody) at dilution of 1:50 (under 40x lens)



Immunofluorescent analysis of HepG2 cells, using KRAS antibody Catalog No: at 1:25 dilution and Rhodamine-labeled goat anti-rabbit IgG (red). Blue

pseudocolor = DAPI (fluorescent DNA dye).



1×10^6 HepG2 cells were stained with 0.2ug KRAS-2B-specific antibody (Catalog No:112121, red) and control antibody (blue). Fixed with 90% MeOH blocked with 3% BSA (30 min). Alexa Fluor 488-conjugated AffiniPure Goat Anti-Rabbit IgG(H+L) with dilution 1:1000.