

ING3-specific antibody

Catalog Number: 106982

Product name

ING3-specific antibody

Specificity

Human, Mouse, Rat; other species not tested.

Antibody description

ING3-specific Rabbit Polyclonal antibody. Positive IP detected in mouse kidney tissue. Positive WB detected in human kidney tissue, mouse heart tissue, mouse kidney tissue, mouse liver tissue. Observed molecular weight by Western-blot: 46 kDa

Preparation

This antibody was obtained by immunization of Peptide (Accession Number: NM_019071). Purification method: Antigen affinity purified.

Formulation

PBS with 0.02% sodium azide and 50% glycerol pH 7.3.

Storage

Store at -20°C. DO NOT ALIQUOT

Clonality

Polyclonal

Ig Type

Rabbit IgG

Applications

ELISA, WB, IP

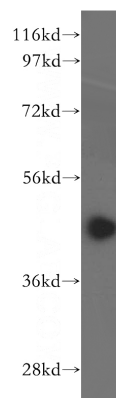
Dilutions

Recommended Dilution:

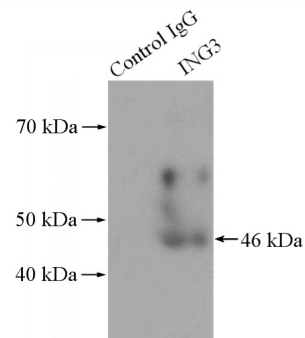
WB: 1:500-1:5000

IP: 1:200-1:2000

Validations



human kidney tissue were subjected to SDS PAGE followed by western blot with Catalog No:111794(ING3-specific antibody) at dilution of



+ - Normal Rabbit IgG
- + ING3 Antibody

1:500

IP Result of anti-ING3-specific (IP:Catalog No:111794, 4ug; Detection:Catalog No:111794 1:500) with mouse kidney tissue lysate 4000ug.