

# ING1-specific antibody



Catalog Number: 106981

## Product name

ING1-specific antibody

## Specificity

Human, Mouse; other species not tested.

## Antibody description

ING1-specific Rabbit Polyclonal antibody. Positive IP detected in mouse heart tissue. Positive WB detected in human heart tissue. Observed molecular weight by Western-blot: 30 kDa

## Preparation

This antibody was obtained by immunization of Peptide (Accession Number: NM\_198218). Purification method: Antigen affinity purified.

## Formulation

PBS with 0.02% sodium azide and 50% glycerol pH 7.3.

## Storage

Store at -20°C. DO NOT ALIQUOT

## Clonality

Polyclonal

## Ig Type

Rabbit IgG

## Applications

ELISA, WB, IP

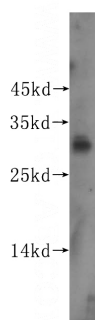
## Dilutions

Recommended Dilution:

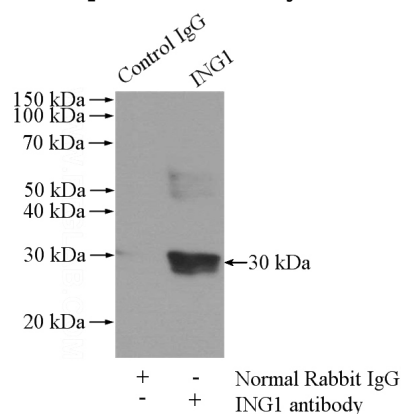
WB: 1:200-1:2000

IP: 1:200-1:1000

## Validations



human heart tissue were subjected to SDS PAGE followed by western blot with Catalog No:111791(ING1-specific antibody) at dilution of



1:300

IP Result of anti-ING1-specific (IP:Catalog No:111791, 2ug; Detection:Catalog No:111791 1:300) with mouse heart tissue lysate 4000ug.