

Anti-ETHE1 / HSCO antibody



Catalog Number: 106736

Product name

Anti-ETHE1 / HSCO antibody

Immunogen

[Human ETHE1 / HSCO \(His Tag\) recombinant protein](#)

Specificity

Human ETHE1 / HSCO

Antibody description

Rabbit polyclonal to ETHE1 / HSCO

Preparation

Produced in rabbits immunized with purified, recombinant Human ETHE1 / HSCO (rh ETHE1 / HSCO; O95571; Leu13-Ala254). ETHE1 / HSCO specific IgG was purified by Human ETHE1 / HSCO affinity chromatography.

Formulation

0.2 µm filtered solution in PBS

Storage

This antibody can be stored at 2°C-8°C for one month without detectable loss of activity. Antibody products are stable for twelve months from date of receipt when stored at -20°C to -80°C. Preservative-Free.

Sodium azide is recommended to avoid contamination (final concentration 0.05%-0.1%). It is toxic to cells and should be disposed of properly. Avoid repeated freeze-thaw cycles.

Clonality

Polyclonal

Ig Type

Rabbit IgG

Applications

ELISA, WB, IHC-P, IP

Dilutions

WB: 5-10 µg/ml

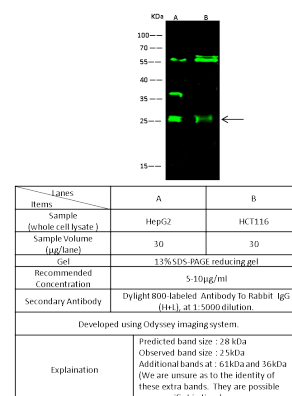
ELISA:0.1-0.2 µg/mL

This antibody can be used at 0.1-0.2 µg/mL with the appropriate secondary reagents to detect Human ETHE1 / HSCO. The detection limit for Human ETHE1 / HSCO is < 0.039 ng/well.

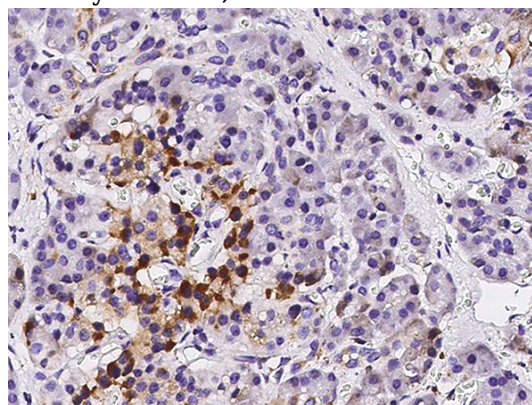
IHC-P: 0.1-1 µg/ml

IP: 1-4 µg/mg of lysate

Validations



ETHE1 / HSCO Antibody, Rabbit PAb, Antigen Affinity Purified, Western blot

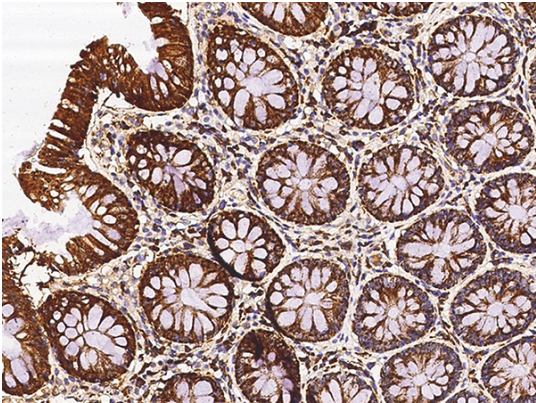


ETHE1 / HSCO Antibody, Rabbit PAb, Antigen Affinity Purified, Immunohistochemistry

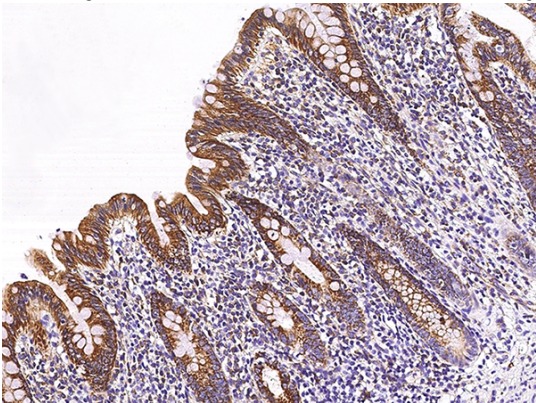
Anti-ETHE1 / HSCO antibody



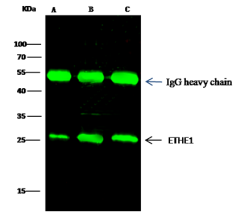
Catalog Number: 106736



ETHE1 / HSCO Antibody, Rabbit PAb, Antigen Affinity Purified, Immunohistochemistry



ETHE1 / HSCO Antibody, Rabbit PAb, Antigen Affinity Purified, Immunoprecipitation



Item	Lanes		
	A	B	C
Sample (whole cell lysate)	HeLa	HepG2	Jurkat
Sample quantity	0.5 mg		
IP antibody quantity	2 µg		
Protein G agarose	15 µl of 50% Protein G Agarose		
Gel	13% SDS-PAGE reducing gel		
Primary antibody	ETHE1 antibody at 10 µg/ml		
Secondary antibody	Dylight 600-labeled antibody to rabbit IgG (H+L), at 1:5000 dilution.		

ETHE1 / HSCO Antibody, Rabbit PAb, Antigen Affinity Purified, Immunoprecipitation