

Product name

Anti-PTS antibody

Clonality

Polyclonal

Immunogen

[Human PTS \(His Tag\) recombinant protein](#)

Ig Type

Rabbit IgG

Specificity

Human PTS

Applications

ELISA, IHC-P

Antibody description

Rabbit polyclonal to PTS

Dilutions

ELISA: 0.1-0.2 µg/mL

Preparation

Produced in rabbits immunized with purified, recombinant Human PTS (rh PTS; Q03393; Met1-Glu145). PTS specific IgG was purified by Human PTS affinity chromatography.

This antibody can be used at 0.1-0.2 µg/mL with the appropriate secondary reagents to detect Human PTS. The detection limit for Human PTS is < 0.039 ng/well.

IHC-P: 0.1-1 µg/ml

Formulation

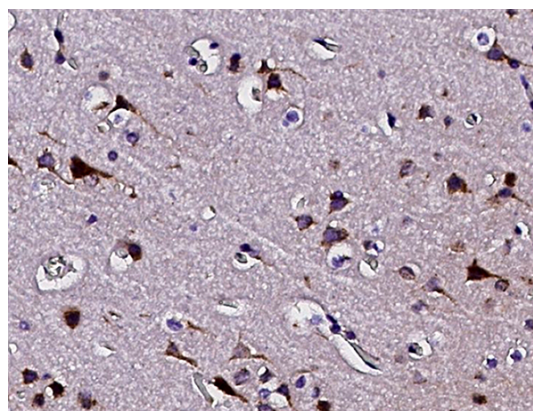
0.2 µm filtered solution in PBS

Validations**Storage**

This antibody can be stored at 2°C-8°C for one month without detectable loss of activity. Antibody products are stable for twelve months from date of receipt when stored at -20°C to -80°C.

Preservative-Free.

Sodium azide is recommended to avoid contamination (final concentration 0.05%-0.1%). It is toxic to cells and should be disposed of properly. Avoid repeated freeze-thaw cycles.



PTS Antibody, Rabbit PAb, Antigen Affinity Purified, Immunohistochemistry