

Anti-HSPD1/HSP60 antibody



Catalog Number: 106705

Product name

Anti-HSPD1/HSP60 antibody

Immunogen

[Mouse HSPD1/HSP60 \(His Tag\) recombinant protein](#)

Specificity

Mouse HSPD1 / HSP60

Antibody description

Rabbit polyclonal to HSPD1/HSP60

Preparation

Produced in rabbits immunized with purified, recombinant Mouse HSPD1 / HSP60 (rM HSPD1 / HSP60; NP_034607.3; Leu2-Phe573). HSPD1 / HSP60 specific IgG was purified by Mouse HSPD1 / HSP60 affinity chromatography.

Formulation

0.2 µm filtered solution in PBS

Storage

This antibody can be stored at 2°C-8°C for one month without detectable loss of activity. Antibody products are stable for twelve months from date of receipt when stored at -20°C to -80°C.

Preservative-Free.

Sodium azide is recommended to avoid contamination (final concentration 0.05%-0.1%). It is toxic to cells and should be disposed of properly. Avoid repeated freeze-thaw cycles.

Clonality

Polyclonal

Ig Type

Rabbit IgG

Applications

WB, IHC-P, IP

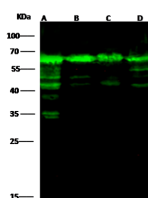
Dilutions

WB: 2-10 µg/ml

IHC-P: 0.1-2 µg/mL

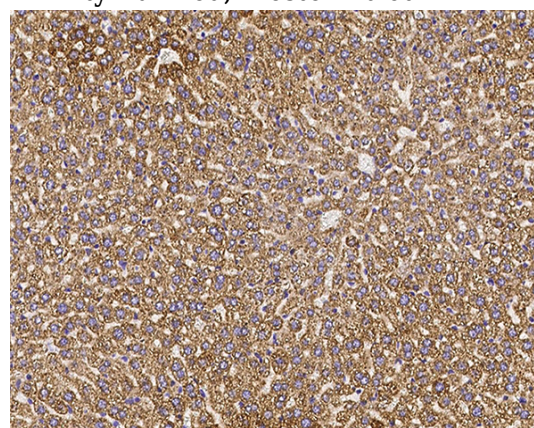
IP: 0.5-2 uL/mg of lysate

Validations



Items	Lanes	A	B	C	D
Sample (whole cell lysate)		HepG2	K562	NIH3T3	A431
Sample Volume (µg/lane)		30	30	30	30
Gel	13% SDS-PAGE, reducing gel				
Recommended Concentration	2-10 µg/ml				
Secondary Antibody	Dylight 800-labeled Antibody to Rabbit IgG (H+L), at 1:5000 dilution.				
Developed using Odyssey imaging system.					
Explanation	Predicted band size : 60 kDa Observed band size : 60 kDa Additional bands at : 55 kDa, 48 kDa, 45 kDa and 35 kDa (We are unsure as to the identity of these extra bands.)				

HSPD1 / HSP60 Antibody, Rabbit PAb, Antigen Affinity Purified, Western blot



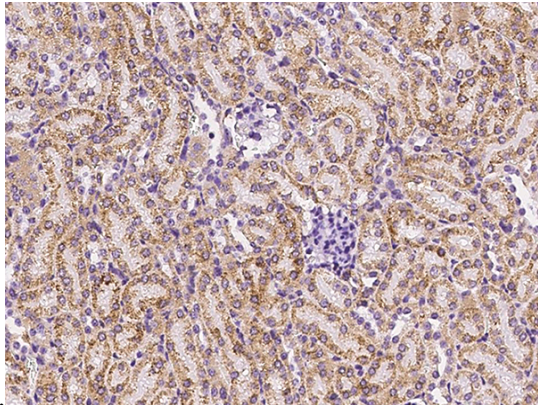
HSPD1 / HSP60 Antibody, Rabbit PAb, Antigen Affinity Purified, Immunohistochemistry

Immunochemical staining of mouse HSP60 in mouse liver with rabbit polyclonal antibody (0.5 µg/mL, formalin-fixed paraffin embedded

Anti-HSPD1/HSP60 antibody



Catalog Number: 106705

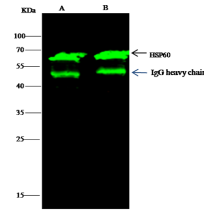


sections).

HSPD1 / HSP60 Antibody, Rabbit PAb, Antigen Affinity Purified, Immunohistochemistry

Immunochemical staining of mouse HSP60 in

mouse kidney with rabbit polyclonal antibody (0.5 µg/mL, formalin-fixed paraffin embedded



Item \ Lane	A	B
Sample (whole cell lysate)	HepG2	K562
Sample quantity	0.5 mg	
IP antibody quantity	2 µg	
Protein G agarose	1.5 µl of 50% Protein G Agarose	
Gel	15% SDS-PAGE reducing gel	
Primary antibody	His-mHSP60 antibody at 10 µg/ml	
Secondary antibody	Dylight 800-labeled antibody to rabbit IgG (H+L), at 1:5000 dilution	

sections).

HSPD1 / HSP60 Antibody, Rabbit PAb, Antigen Affinity Purified, Immunoprecipitation