

Anti-LSM1 antibody



Catalog Number: 106629

Product name

Anti-LSM1 antibody

Immunogen

[Human LSM1 \(His Tag\) recombinant protein](#)

Specificity

Human LSM1

Antibody description

Rabbit polyclonal to LSM1

Preparation

Produced in rabbits immunized with purified, recombinant Human LSM1 (rh LSM1; O15116; Met1-Tyr133). LSM1 specific IgG was purified by Human LSM1 affinity chromatography.

Formulation

0.2 µm filtered solution in PBS

Storage

This antibody can be stored at 2°C-8°C for one month without detectable loss of activity. Antibody products are stable for twelve months from date of receipt when stored at -20°C to -80°C. Preservative-Free.

Sodium azide is recommended to avoid contamination (final concentration 0.05%-0.1%). It is toxic to cells and should be disposed of properly. Avoid repeated freeze-thaw cycles.

Clonality

Polyclonal

Ig Type

Rabbit IgG

Applications

ELISA, WB, IHC-P, IP

Dilutions

WB: 5-10 µg/ml

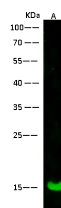
ELISA: 0.1-0.2 µg/mL

This antibody can be used at 0.1-0.2 µg/mL with the appropriate secondary reagents to detect Human LSM1. The detection limit for Human LSM1 is < 0.039 ng/well.

IHC-P: 0.1-1 µg/ml

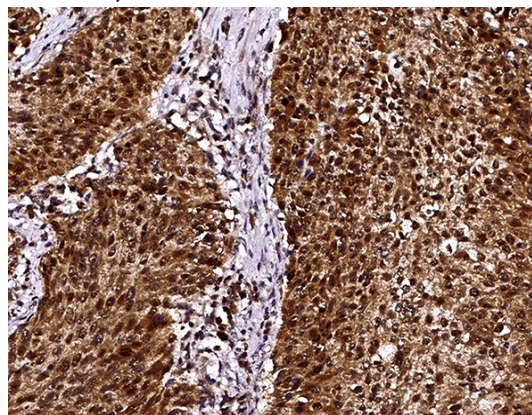
IP: 0.5-2 µg/mg of lysate

Validations



| Lanes | A |
|----------------------------|--|
| Items | |
| Sample (whole cell lysate) | K562 |
| Sample Volume (µg/lane) | 30 |
| Gel | 13%SDS-PAGE reducing gel |
| Recommended Concentration | 5-10 µg/ml |
| Secondary Antibody | Dylight 800 labeled Antibody to Rabbit IgG (H+L), at 1:5000 dilution. Developed using Odyssey imaging system. |
| Explanation | Predicted band size : 15 kDa Observed band size : 15 kDa |

LSM1 Antibody, Rabbit Pab, Antigen Affinity Purified, Western blot

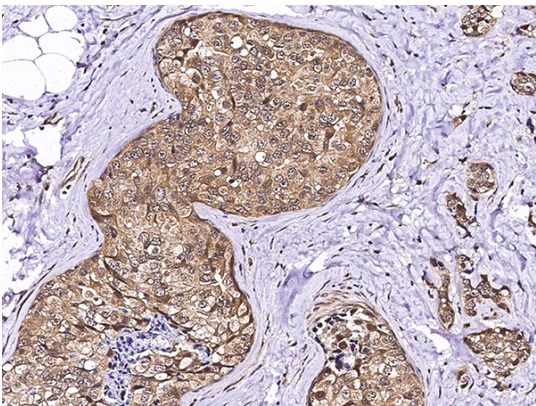


LSM1 Antibody, Rabbit Pab, Antigen Affinity Purified, Immunohistochemistry

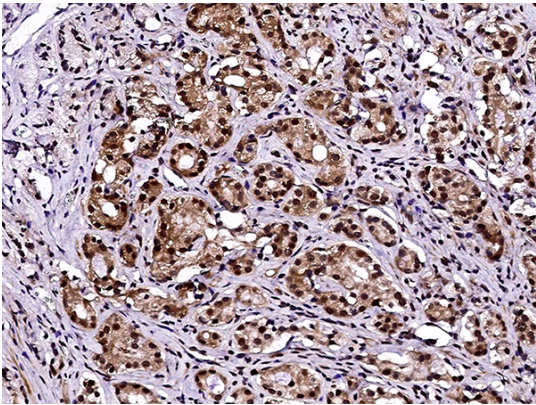
Anti-LSM1 antibody



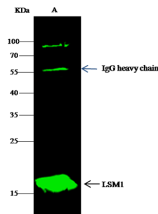
Catalog Number: 106629



LSM1 Antibody, Rabbit Pab, Antigen Affinity Purified, Immunohistochemistry



LSM1 Antibody, Rabbit Pab, Antigen Affinity Purified, Immunohistochemistry



| Items | Antigen |
|----------------------------|--|
| Sample (whole-cell lysate) | K562 |
| Sample quantity | 0.5 mg |
| IP antibody quantity | 2 µg |
| Protein G agarose | 15 µl of 50% Protein G Agarose |
| Gel | 13% SDS-PAGE reducing gel |
| Primary antibody | LSM1 antibody at 5 µg/ml |
| Secondary antibody | Dylight 800-labeled antibody to rabbit IgG (F+L), at 1:5000 dilution |

LSM1 Antibody, Rabbit Pab, Antigen Affinity Purified, Immunoprecipitation