

# Anti-IL13RA1/IL-13RA1 antibody



Catalog Number: 106545

## Product name

Anti-IL13RA1/IL-13RA1 antibody

## Immunogen

[Human IL13RA1/IL-13RA1 \(His Tag\) recombinant protein](#)

## Specificity

Human IL-13RA1 / CD213a1

## Antibody description

Rabbit monoclonal to IL13RA1/IL-13RA1

## Preparation

This antibody was obtained from a rabbit immunized with purified, recombinant Human IL-13RA1 / CD213a1 (rh IL-13RA1 / CD213a1; NP\_001551.1; Met 1-Thr 343) and conjugated with PE under optimum conditions, the unreacted PE was removed.

## Formulation

Aqueous solution containing 0.5% BSA and 0.09% sodium azide

## Storage

This antibody is stable for 12 months from date of receipt when stored at 2°C-8°C. Protected from prolonged exposure to light. Do not freeze ! Sodium azide is toxic to cells and should be disposed of properly. Flush with large volumes of

water during disposal.

## Clonality

Monoclonal

## Ig Type

Rabbit IgG

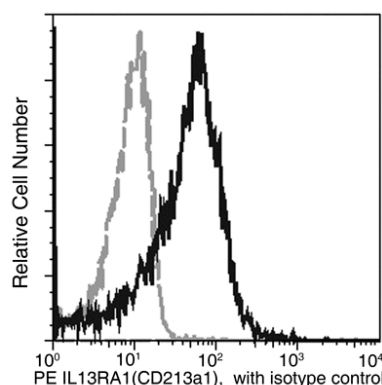
## Applications

FCM

## Dilutions

FCM

## Validations



IL-13RA1 / CD213a1 Antibody (PE), Rabbit MAb, Flow cytometric

Flow cytometric analysis of anti-human IL13RA1 (CD213a1) on human whole blood granulocytes. Human granulocytes were stained with PE-anti human IL13RA1 (CD213a1) (solid line) or PE-rabbit isotype control (dashed line).