

# Anti-PRTFDC1 antibody



Catalog Number: 106463

## Product name

Anti-PRTFDC1 antibody

## Immunogen

[Human PRTFDC1 \(His Tag\) recombinant protein](#)

## Specificity

Human PRTFDC1

## Antibody description

Rabbit polyclonal to PRTFDC1

## Preparation

Produced in rabbits immunized with purified, recombinant Human PRTFDC1 (rh PRTFDC1; Q9NRG1-1; Met1-Val225). PRTFDC1 specific IgG was purified by Human PRTFDC1 affinity chromatography.

## Formulation

0.2  $\mu$ m filtered solution in PBS

## Storage

This antibody can be stored at 2°C-8°C for one month without detectable loss of activity. Antibody products are stable for twelve months from date of receipt when stored at -20°C to -80°C.

Preservative-Free.

Sodium azide is recommended to avoid contamination (final concentration 0.05%-0.1%). It is toxic to cells and should be disposed of properly. Avoid repeated freeze-thaw cycles.

## Clonality

Polyclonal

## Ig Type

Rabbit IgG

## Applications

ELISA, WB

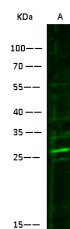
## Dilutions

WB: 5-10  $\mu$ g/ml

ELISA:0.1-0.2  $\mu$ g/mL

This antibody can be used at 0.1-0.2  $\mu$ g/mL with the appropriate secondary reagents to detect Human PRTFDC1. The detection limit for Human PRTFDC1 is 0.00245 ng/well.

## Validations



| Items                         | Lanes | A  |
|-------------------------------|-------|--|
| Sample (whole cell lysate)    |       | HepG2  |
| Sample volume ( $\mu$ g/lane) |       | 30   |
| Gel                           |       | 13%SDS-PAGE reducing gel   |
| Recommended Concentration     |       | 5-10 $\mu$ g/ml  |
| Secondary Antibody            |       | Dylight 800-labeled Antibody To Rabbit IgG(H+L), at 1:5000 dilution. |

PRTFDC1 Antibody, Rabbit PAb, Antigen Affinity Purified, Western blot