

# Anti-STK4/MST1 antibody



Catalog Number: 106278

## Product name

Anti-STK4/MST1 antibody

## Immunogen

[Human STK4/MST1 \(His Tag\) recombinant protein](#)

## Specificity

Human STK4 / MST1

## Antibody description

Mouse monoclonal to STK4/MST1

## Preparation

This antibody was produced from a hybridoma resulting from the fusion of a mouse myeloma with B cells obtained from a mouse immunized with purified, recombinant Human STK4 / MST1 (rh STK4 / MST1; Q13043-1; Glu2-Phe487). The IgG fraction of the cell culture supernatant was purified by Protein A affinity chromatography.

## Formulation

0.2 µm filtered solution in PBS with 5% trehalose

## Storage

This antibody can be stored at 2°C-8°C for one month without detectable loss of activity. Antibody products are stable for twelve months from date of receipt when stored at -20°C to -80°C.

Preservative-Free.

Sodium azide is recommended to avoid contamination (final concentration 0.05%-0.1%). It is toxic to cells and should be disposed of properly. Avoid repeated freeze-thaw cycles.

## Clonality

Monoclonal

## Ig Type

Mouse IgG1

## Applications

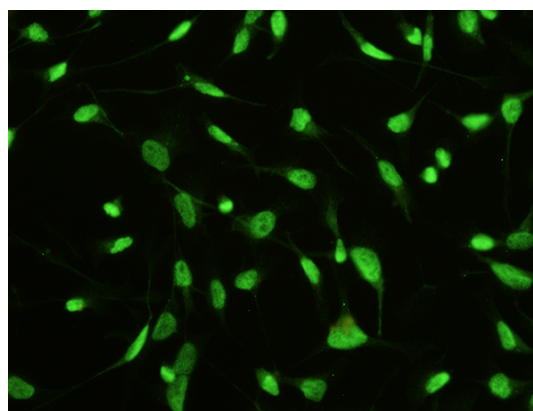
FCM, IF, ICC/IF

## Dilutions

FCM: 0.5-2 µg/Test

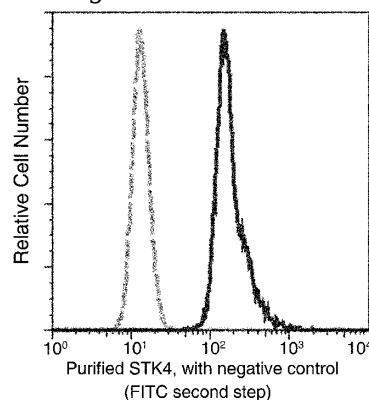
ICC/IF: 10-25 µg/mL

## Validations



STK4 / MST1 Antibody, Mouse MAb, Immunofluorescence

Immunofluorescence staining of Human STK4 in HeLa cells. Cells were fixed with 4% PFA, permeabilized with 1% Triton X-100 in PBS, blocked with 10% serum, and incubated with Mouse anti-Human STK4 monoclonal antibody (15 µg/ml) at 37°C 1 hour. Then cells were stained with the Alexa Fluor® 488-conjugated Goat Anti-mouse IgG secondary antibody (green). Positive staining was localized to nuclear and cytoplasm.



STK4 / MST1 Antibody, Mouse MAb

# Anti-STK4/MST1 antibody



Catalog Number: 106278

---

Flow cytometric analysis of Human STK4 expression on HeLa cells. The cells were treated according to manufacturer's manual (BD Pharmingen™ Cat. No. 554714), stained with purified anti-Human STK4, then a FITC-

conjugated second step antibody. The fluorescence histograms were derived from gated events with the forward and side light-scatter characteristics of intact cells.