

Anti-Cathepsin A/CTSA antibody



Catalog Number: 106087

Product name

Anti-Cathepsin A/CTSA antibody

Immunogen

[Mouse Cathepsin A/CTSA \(His Tag\) recombinant protein](#)

Specificity

Mouse Cathepsin A / CTSA

Antibody description

Rabbit polyclonal to Cathepsin A/CTSA

Preparation

Produced in rabbits immunized with purified, recombinant Mouse Cathepsin A / CTSA (rh Cathepsin A / CTSA; P16675-1; Met1-Tyr474). Cathepsin A / CTSA specific IgG was purified by Mouse Cathepsin A / CTSA affinity chromatography.

Formulation

0.2 µm filtered solution in PBS

Storage

This antibody can be stored at 2°C-8°C for one month without detectable loss of activity. Antibody products are stable for twelve months from date of receipt when stored at -20°C to -80°C.

Preservative-Free.

Sodium azide is recommended to avoid contamination (final concentration 0.05%-0.1%). It is toxic to cells and should be disposed of properly. Avoid repeated freeze-thaw cycles.

Clonality

Polyclonal

Ig Type

Rabbit IgG

Applications

ELISA, WB, IP

Dilutions

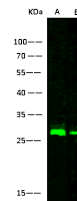
WB: 5-10 µg/ml

ELISA:0.1-0.2 µg/mL

This antibody can be used at 0.1-0.2 µg/mL with the appropriate secondary reagents to detect Mouse Cathepsin A / CTSA. The detection limit for Mouse Cathepsin A / CTSA is < 0.039 ng/well.

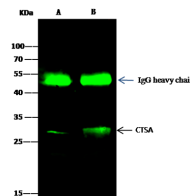
IP: 4-6 µg/mg of lysate

Validations



Items	Lanes	A	B
Sample (whole cell lysate)		HeLa	HepG2
Sample Volume (µg/lane)		30	30
Gel		13% SDS-PAGE reducing gel	
Recommended concentration		5-10µg/ml	
Secondary Antibody		Dylight 800-labeled Antibody to Rabbit IgG (H+L), at 1:5000 dilution	
Developed		using Odyssey imaging system	
Explanation		Predicted band size : 54.30 kDa Observed band size : 28 kDa	

Cathepsin A / CTSA Antibody, Rabbit PAb, Antigen Affinity Purified, Western blot



Items	Lanes	A	B
Sample (whole-cell lysate)		K562	A549
Sample quantity		0.5 mg	
IP antibody quantity		2 µg	
Protein G agarose		1.5 µl of 50% Protein G Agarose	
Gel		13% SDS-PAGE reducing gel	
Primary antibody		mCTSA antibody at 10 µg/ml	
Secondary antibody		Dylight 800-labeled antibody to rabbit IgG (H+L), at 1:5000 dilution.	

Cathepsin A / CTSA Antibody, Rabbit PAb, Antigen Affinity Purified, Immunoprecipitation