

Anti-CTRC/chymotrypsin C antibody



Catalog Number: 105762

Product name

Anti-CTRC/chymotrypsin C antibody

Immunogen

[Human CTRC/chymotrypsin C \(His Tag\) recombinant protein](#)

Specificity

Human CTRC / chymotrypsin C

Antibody description

Rabbit polyclonal to CTRC/chymotrypsin C

Preparation

Produced in rabbits immunized with purified, recombinant Human CTRC / chymotrypsin C (rh CTRC / chymotrypsin C; Q99895; Met1-Leu268). CTRC / chymotrypsin C specific IgG was purified by Human CTRC / chymotrypsin C affinity chromatography.

Formulation

0.2 µm filtered solution in PBS

Storage

This antibody can be stored at 2°C-8°C for one month without detectable loss of activity. Antibody products are stable for twelve months from date of receipt when stored at -20°C to -80°C.

Preservative-Free.

Sodium azide is recommended to avoid contamination (final concentration 0.05%-0.1%). It is toxic to cells and should be disposed of

properly. Avoid repeated freeze-thaw cycles.

Clonality

Polyclonal

Ig Type

Rabbit IgG

Applications

ELISA, IHC-P

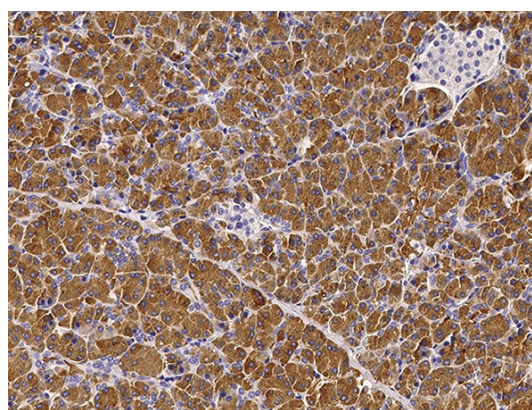
Dilutions

ELISA:0.1-0.2 µg/mL

This antibody can be used at 0.1-0.2 µg/mL with the appropriate secondary reagents to detect Human CTRC / chymotrypsin C. The detection limit for Human CTRC / chymotrypsin C is 0.00975 ng/well.

IHC-P: 0.1-2 µg/ml

Validations



CTRC / chymotrypsin C Antibody, Rabbit PAb, Antigen Affinity Purified, Immunohistochemistry