

Anti-MCP-3/CCL7 antibody



Catalog Number: 105670

Product name

Anti-MCP-3/CCL7 antibody

Immunogen

[Human MCP-3/CCL7 \(His Tag\) recombinant protein](#)

Specificity

Human MCP-3 / CCL7

Has cross-reactivity in ELISA with Human CCL1; Human CCL8

No cross-reactivity in ELISA with Human CCL11

Antibody description

Mouse monoclonal to MCP-3/CCL7

Preparation

This antibody was produced from a hybridoma resulting from the fusion of a mouse myeloma with B cells obtained from a mouse immunized with purified, recombinant Human MCP-3 / CCL7 (rh MCP-3 / CCL7; NP_006264.2; Gln24-Leu99) and conjugated with PE under optimum conditions, the unreacted PE was removed.

Formulation

Aqueous solution containing 0.5% BSA and 0.09% sodium azide

Storage

This antibody is stable for 12 months from date of receipt when stored at 2°C-8°C. Protected from prolonged exposure to light. Do not freeze ! Sodium azide is toxic to cells and should be disposed of properly. Flush with large volumes of

water during disposal.

Clonality

Monoclonal

Ig Type

Mouse IgG1

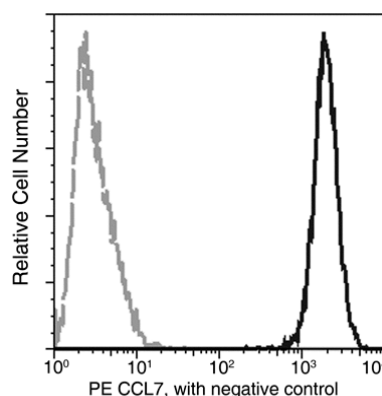
Applications

FCM

Dilutions

FCM

Validations



MCP-3 / CCL7 Antibody (PE), Mouse MAb, Flow Cytometry

Flow cytometric analysis of Human CCL7 expression on THP1 cells. The cells were treated according to manufacturer's manual (BD Pharmingen™ Cat. No. 554714), and then stained with PE-conjugated anti-Human CCL7. The fluorescence histograms were derived from gated events with the forward and side light-scatter characteristics of intact cells.