

Anti-EIF5A2 antibody



Catalog Number: 104769

Product name

Anti-EIF5A2 antibody

Immunogen

[Human EIF5A2 \(His Tag\) recombinant protein](#)

Specificity

Human EIF5A2

Antibody description

Rabbit polyclonal to EIF5A2

Preparation

Produced in rabbits immunized with purified, recombinant Human EIF5A2 (rh EIF5A2; Q9GZV4; Met1-Lys153). EIF5A2 specific IgG was purified by Human EIF5A2 affinity chromatography.

Formulation

0.2 µm filtered solution in PBS

Storage

This antibody can be stored at 2°C-8°C for one month without detectable loss of activity. Antibody products are stable for twelve months from date of receipt when stored at -20°C to -80°C.

Preservative-Free.

Sodium azide is recommended to avoid contamination (final concentration 0.05%-0.1%). It is toxic to cells and should be disposed of properly. Avoid repeated freeze-thaw cycles.

Clonality

Polyclonal

Ig Type

Rabbit IgG

Applications

ELISA, WB, IHC-P, IP

Dilutions

WB: 10-30 µg/mL

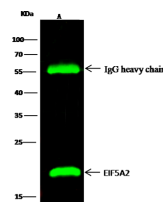
ELISA: 0.1-0.2 µg/mL

This antibody can be used at 0.1-0.2 µg/mL with the appropriate secondary reagents to detect Human EIF5A2. The detection limit for Human EIF5A2 is < 0.039 ng/well.

IHC-P: 0.1-1 µg/mL

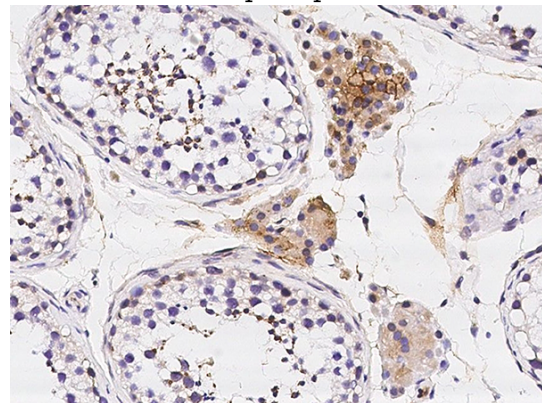
IP: 0.5-2 µg/mg of lysate

Validations



| Items | Lanes | A |
|---------------------------|-------|--|
| Sample (wholecell lysate) | | 293T |
| Sample quantity | | 0.5 mg |
| IP antibody quantity | | 2 µg |
| Protein G agarose | | 15 µl of 50% Protein G Agarose |
| Gel | | 15% SDS-PAGE reducing gel |
| Primary antibody | | HS-EIF5A2 antibody at 10 µg/ml |
| Secondary antibody | | Dylight 800-labeled antibody to rabbit IgG (H+L), at 1:5000 dilution |

EIF5A2 Antibody, Rabbit PAb, Antigen Affinity Purified, Immunoprecipitation



EIF5A2 Antibody, Rabbit PAb, Antigen Affinity Purified, Immunohistochemistry

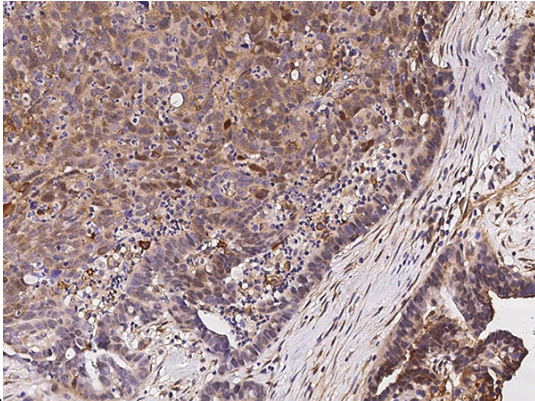
Immunochemical staining of human EIF5A2 in human testis with rabbit polyclonal antibody (0.5

Anti-EIF5A2 antibody



Catalog Number: 104769

μg/mL, formalin-fixed paraffin embedded

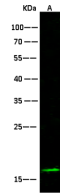


sections).

EIF5A2 Antibody, Rabbit PAb, Antigen Affinity Purified, Immunohistochemistry

Immunochemical staining of human EIF5A2 in

human ovarian cancer with rabbit polyclonal antibody (0.5 μg/mL, formalin-fixed paraffin



| Items | Lanes | A |
|----------------------------|-------|---|
| Sample (whole cell lysate) | | 293T |
| Sample Volume (μg/lane) | | 30 |
| Gel | | 13% SDS-PAGE reducing gel |
| Recommended Concentration | | 10-30 μg/ml |
| Secondary Antibody | | Dylight 800-labeled Antibody To Rabbit IgG (H+L), at 1:5000 dilution. |
| Explanation | | Developed using Odyssey imaging system. Predicted band size : 14 kDa Observed band size : 15 kDa Additional bands at : 55 kDa and 36 kDa (We are unsure as to the identity of these extra bands. They are possible non-specific bindings). |

embedded sections).

EIF5A2 Antibody, Rabbit PAb, Antigen Affinity Purified, Western blot